



# LivePremier™

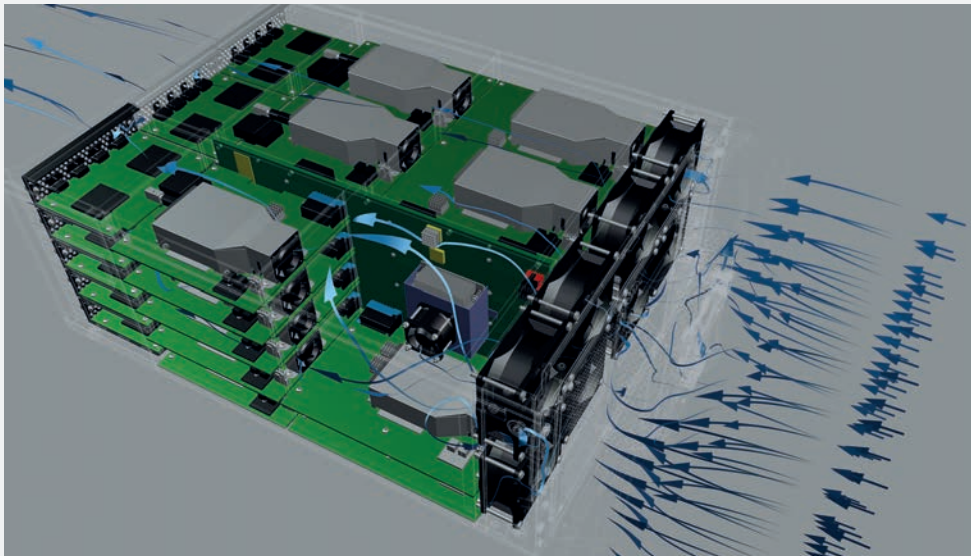
PRESENTATION SWITCHERS

 ANALOG WAY®

**LivePremier™** is a full range of modular and scalable 4K/8K multi-screen presentation systems and videowall processors, delivering uncompromising presentation experiences to high-end staging and premium system integration. The **LivePremier™** series comprises five high-performance pre-configured products (Aquilon RS alpha, RS1, RS2, RS3 and RS4) as well as two fully customizable models (Aquilon C and C+) that can be tailored to match the requirements of any project or event.

## EXTREME PERFORMANCE

The **LivePremier™** series of products offers versatile 4K digital connectivity, unmatched real-time 10/12-bit 4:4:4 video processing power, best-in-class image quality and pure 4K60p on each input and output with ultra-low latency. Ideally tailored to large scale auditoriums, conference rooms, staging live events, houses of worship, corporate lobbies and sports venues, the **LivePremier™** series offers almost unlimited possibilities for future applications and possesses enough bandwidth to support evolving requirements, such as 8K, higher framerates and more...

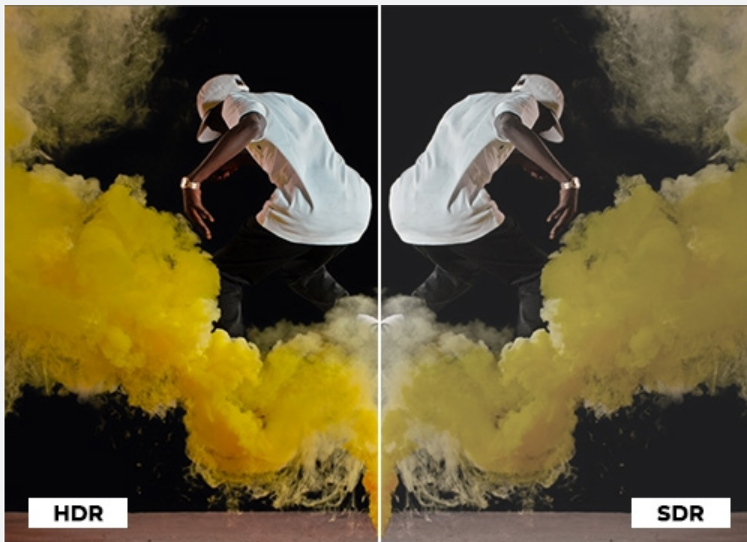


## INDUSTRIAL GRADE RELIABILITY

The **LivePremier™** systems are specifically engineered to perform to the highest standards in mission-critical applications and road-hardened to survive frequent shipping and tough live events. By combining a heavy-duty modular design, the highest quality components selected for their proven reliability and features such as redundant swappable power supplies and smart thermal management, the **LivePremier™** series delivers uninterrupted 24/7 performance and peace of mind!

## VERSATILE FOR THE HIGHEST FLEXIBILITY OF CONFIGURATIONS

The modular design of the **LivePremier™** series allows you to easily swap in I/O cards to accommodate a variety of connectivity arrangements and your match source and display requirements. Per chassis, the **LivePremier™** series features up to 24 inputs and 20 outputs configurable as single screens, edge-blended widescreens or scaled auxiliary outputs, 2 dedicated Multiviewer outputs and up to 12x 4K or 24x HD freely assignable mixing layers. The **LivePremier™** series also offers powerful features that will allow you to handle any creative display configuration, such as a custom output formats, output rotation, AOI, bezel compensation and pixel pitch management. The **LivePremier™** systems are now also compatible with the Analog Way **DPH104** video processor which converts one 4K DP 1.2 output to four independent 1080p HDMI outputs.

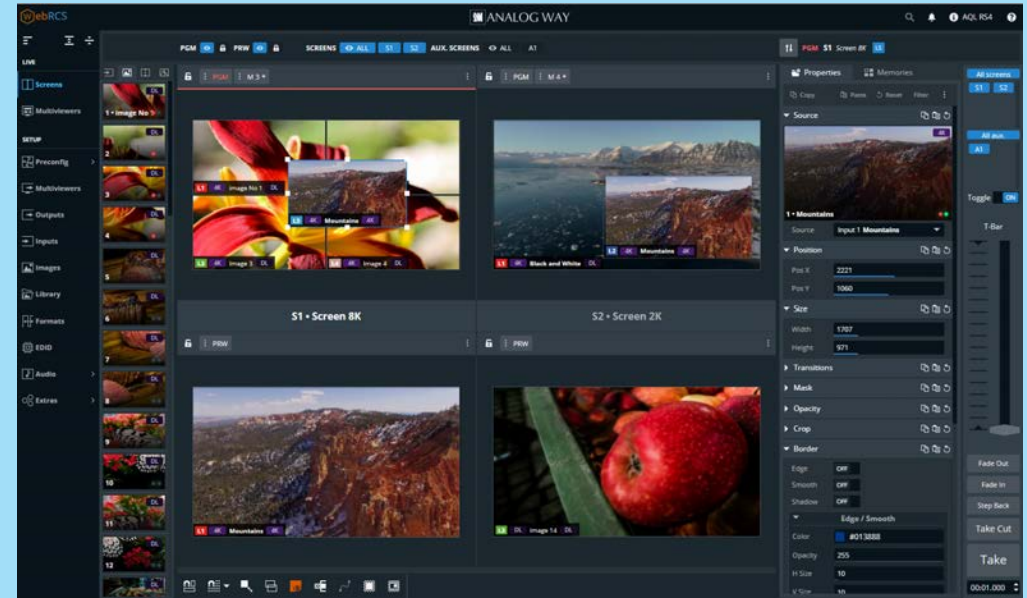


## SMART FUNCTIONALITIES

The **LivePremier™** series of products features state-of-the-art real time processing that will help you to unleash all your creative potential and produce flawless, stunning live presentations: true seamless switching, real-time SDR/HDR conversion, flying layer movement, advanced cut and fill, cutting edge keying engine... It also allows to remove external audio de-embedding boxes: in just a few easy clicks, audio can be de-embedded from video sources, routed directly using onboard Dante™ card and re-embedded from external audio processor for sending to display, recording device, or streaming.

## UNRIVALED EASE OF USE

For the best ease of setup and to ensure flawless control of multi-screen presentations, the **LivePremier™** series features a totally new, cutting-edge HTML5-based user interface, the **Web RCS**, compatible with any device or platform including iOS and Android devices. Conceived to greatly increase productivity and reduce learning curve, the **Web RCS** offers dozens of unique features you will instantly love and that make configuration and control a breeze. And if you want to create a configuration offline or simply refresh your skills, you can give a try to the free **LivePremier™ Simulator** and use to the integrated **Web RCS** to prepare a show on the road that can then be exported directly to a real device.



Web RCS



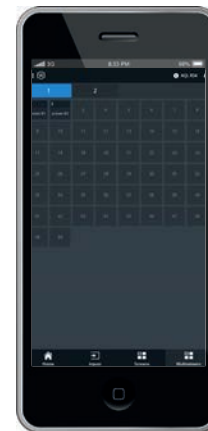
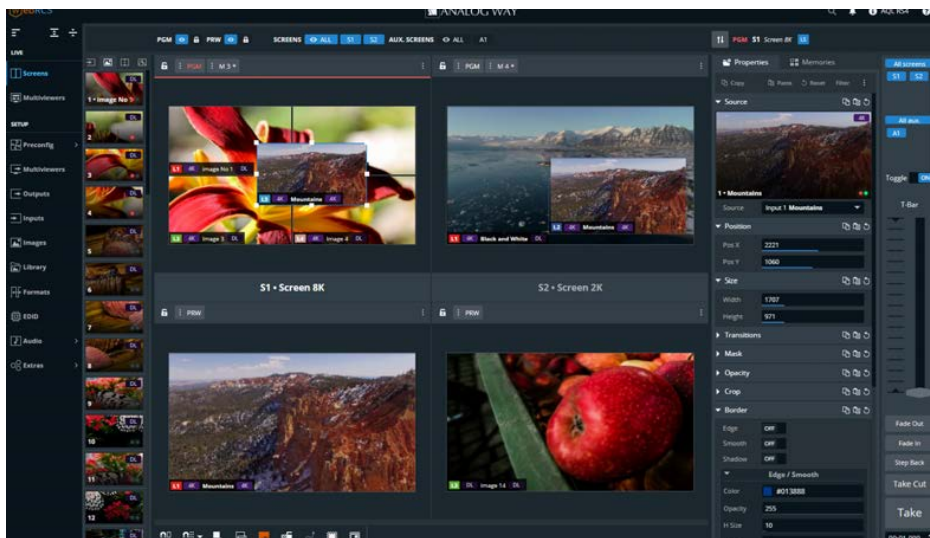
## POWERFUL AND FLEXIBLE CONTROL OPTIONS

In addition to the powerful **Web RCS**, the **LivePremier™** series features IP (Ethernet) control via a standard TCP/IP socket connection supported by all major third-party control systems. Each unit can also be controlled by the free Crestron® driver as well as by **AW Video Compositor**, a unique solution that gives system integrators and Crestron® developers all the tools they need to easily incorporate the power of **LivePremier™** image processors video compositing into a single point of control Crestron® touch-screen application. Additionally, they can be controlled by a comprehensive range of remote control solutions from the **Shot Box²** and the **Control Box²** to the powerful standalone event controller, the **RC400T**, featuring premium buttons with dynamic LCD labels, a T-Bar and a Joystick, that will streamline your control of the **LivePremier™** series.

## QUICK OVERVIEW

Aquilon models	RS alpha	RS1	RS2	RS3	RS4	C	C+
4K60p inputs	8	16	16	24	24	up to 16	up to 24
4K60p outputs	4	8	12	12	16	up to 16	up to 20
Max 4K mixing layers	4	8	8	8	12	up to 8	up to 12
Max DL/2K mixing layers	8	8	16	16	24	up to 16	up to 24
Simul. 4K still image channels	12	12	12	24	24	up to 12	up to 24
Build-to-Order (BTO)						✓	✓
Rack units	4	4	4	5	5	4	5

## WEB RCS: UNRIVALED EASE OF USE



The **LivePremier™ series** features an elegant and easy-to-learn web-based embedded application, the **Web RCS**, designed to allow for the best ease of setup and to ensure flawless control of multi-screen presentations. The **Web RCS** uses modern web technologies compatible with any device or platform including iOS and Android devices, and has been designed to offer operators responsive and highly interactive, immersive experiences literally at their fingertips.

Conceived to greatly increase productivity and reduce learning curve, the **Web RCS** offers dozens of unique features that simplify configuring and operating such as high-quality live thumbnails of the connected sources, multi-operator collaboration with password protection and user privileges, multi-language support, walkthrough guides, keyword search and much more...

The **Web RCS** is compatible with any device or platform, including iOS and Android devices

# LIVEPREMIER™'s UNIVERSE

## RENTAL and STAGING

- Small conferences
- Large-scale product launches
- Corporate events
- Multi-screen live concert

## HIGHER EDUCATION

- Classrooms
- Large auditoriums
- Face-to-face courses
- Distance learnings

## CORPORATE

- Small boardrooms
- Training facilities
- Large-scale auditoriums
- Corporate lobbies
- Experience centers



## GOVERNMENT

- Courtrooms
- Council chambers
- Mission critical environments
- Control rooms

## BROADCAST

- TV studios
- Live-streaming
- Production facilities
- Post-production facilities
- Mobile media systems

## ENTERTAINMENT VENUES

- Casino
- E-Sports
- Theme parks
- Stadium
- Museum

## HEALTHCARE

- Surgery
- Radiologists

## HOUSES OF WORSHIP

## Aquilon RS4



## Aquilon RS3



## PRODUCT PICTURES

## Aquilon RS2



## Aquilon RS1





# Aquilon RS alpha



# Aquilon C+



## PRODUCT PICTURES

# Aquilon C



# Cards & Accessories



# Aquilon RS4

Ref. AQL-RS4



**Mission-critical 4K/8K multi-screen presentation system and videowall processor with 24 inputs and 16 outputs, delivering uncompromising presentation experiences to high-end staging and premium system integration**

## **Aquilon RS4 at a glance :**

- 24x 4K60p seamless inputs (12x HDMI 2.0, 8x DP 1.2, 4x 12G-SDI)
- 16x 4K60p HDMI 2.0 outputs
- 120 Mpx throughput at 10-bit 4:4:4 @60Hz on Program
- Up to 12x 4K60p Program outputs or to 16x 2K/Dual-Link@60p Program outputs
- Up to 12x 4K or 24x 2K/Dual-Link mixing layers (doubled if split layers)
- Unscaled live or still image seamless background mixer on each output
- 24x 4K or 48x 2K concurrent still images
- 5RU chassis

## KEY FEATURES :

Based on LivePremier™ platform

Highly ruggedized chassis with cleanable air filter

Swappable redundant power supplies (2+1)

24x seamless 4K60p inputs (12x HDMI 2.0, 8x DP 1.2, 4x 12G-SDI)

16x 4K60p active outputs (16x HDMI 2.0)

True 4K60p 4:4:4 performance on every I/O channel

Ultra-low latency 10 and 12-bit processing

Full set of field swappable I/O cards available separately (DP 1.2, 12G-SDI, HDMI 2.0, SFP+ or HDMI 2.0 over fiber) to accommodate any connectivity arrangements

Support 4K60p input and output as single, double or quad plugs

Compatible with Analog Way DPH104 video processor: easily convert one 4K DP 1.2 output to 4 independent full HD outputs (requires a DP output card)

120 Megapixels throughput at 10-bit 4:4:4 on Program, without restricting Preview or Multiviewer

Up to 12x 4K or 24x DL/2K mixing layers per system (24x 4K or 48x DL/2K split layers), depending on the screens setup

24x 4K or 48x 2K concurrent still images

Unscaled seamless background mixer on each output (using instantaneous still images or live sources)

Flexible layer management

Seamless crossfade on all mixing layers, on all 24 sources

Scaled 4K60p AUX feature for all non-PGM outputs

Ability to create layers on AUX outputs without using processing resources

Ability to place the outputs anywhere on an almost limitless video canvas space for special LED wall applications

Inboard clocks, timers and countdowns for your screens or AUX outputs

Fully functional simulator for offline configuration and practice

Quiet: 45dB average noise at 1m

2x configurable 4K Multiviewers with 64x resizable widgets

Advanced pixel pitch management for LED wall applications

Native Dante™ audio networking hardware and support (64x64)

Real-time SDR/HDR10/HLG conversion based on 3D-LUTs

Rotation capability on each output (increment of 90°)

Independent output rates

Framelock or internal sync. generator

**Web RCS:** highly intuitive, lightning fast web-based user interface based on HTML5 with password protection

Live video thumbnails shown on GUI

Multi operator real-time collaboration

Easily create and recall preset looks on all your screens and auxiliary outputs

Custom output formats for non-standard display applications

Area of Interest feature to customize active areas of outputs

Still images support variable alpha-channels for transparent background on logos

Cut and Fill

Fully functional simulator for offline configuration and practice

EDID management on every input and output

Compatible with HDCP 1.4 and HDCP 2.2

Future proof modular design

Quiet: 49dB average noise at 1m

Remote services and maintenance

Backup and restore functions

# Aquilon RS3

Ref. AQL-RS3



**Mission-critical 4K/8K multi-screen presentation system and videowall processor with 24 inputs and 12 outputs, delivering uncompromising presentation experiences to high-end staging and premium system integration**

## **Aquilon RS3 at a glance :**

- 24x 4K60p seamless inputs (12x HDMI 2.0, 8x DP 1.2, 4x 12G-SDI)
- 12x 4K60p HDMI 2.0 outputs
- 80 Mpx throughput at 10-bit 4:4:4 @60Hz on Program
- Up to 8x 4K60p Program outputs or to 12x 2K/Dual-Link@60p Program outputs
- Up to 8x 4K or 16x 2K/Dual-Link mixing layers (doubled if split layers)
- Unscaled live or still image seamless background mixer on each output
- 24x 4K or 48x 2K concurrent still images
- 5RU chassis

## KEY FEATURES :

Based on LivePremier™ platform

Highly ruggedized chassis with cleanable air filter

Swappable redundant power supplies (2+1)

24x seamless 4K60p inputs (12x HDMI 2.0, 8x DP 1.2, 4x 12G-SDI)

12x 4K60p active outputs (12x HDMI 2.0)

True 4K60p 4:4:4 performance on every I/O channel

Ultra-low latency 10 and 12-bit processing

Full set of field swappable I/O cards available separately (DP 1.2, 12G-SDI, HDMI 2.0, SFP+ or HDMI 2.0 over fiber) to accommodate any connectivity arrangements

Support 4K60p input and output as single, double or quad plugs

Compatible with Analog Way DPH104 video processor: easily convert one 4K DP 1.2 output to 4 independent full HD outputs (requires a DP output card)

80 Megapixels throughput at 10-bit 4:4:4 on Program, without restricting Preview or Multiviewer

Up to 8x 4K or 16x DL/2K mixing layers per system (16x 4K or 32x DL/2K split layers), depending on the screens setup

24x 4K or 48x 2K concurrent still images

Unscaled seamless background mixer on each output (using instantaneous still images or live sources)

Flexible layer management

Seamless crossfade on all mixing layers, on all 24 sources

Scaled 4K60p AUX feature for all non-PGM outputs

Ability to create layers on AUX outputs without using processing resources

Ability to place the outputs anywhere on an almost limitless video canvas space for special LED wall applications

Inboard clocks, timers and countdowns for your screens or AUX outputs

2x configurable 4K Multiviewers with 64x resizable widgets

Advanced pixel pitch management for LED wall applications

Native Dante™ audio networking hardware and support (64x64)

Real-time SDR/HDR10/HLG conversion based on 3D-LUTs

Rotation capability on each output (increment of 90°)

Independent output rates

Framelock or internal sync. generator

**Web RCS:** highly intuitive, lightning fast web-based user interface based on HTML5 with password protection

Live video thumbnails shown on GUI

Multi operator real-time collaboration

Easily create and recall preset looks on all your screens and

auxiliary outputs

Custom output formats for non-standard display applications

Area of Interest feature to customize active areas of outputs

Still images support variable alpha-channels for transparent background on logos

Cut and Fill

Fully functional simulator for offline configuration and practice

EDID management on every input and output

Compatible with HDCP 1.4 and HDCP 2.2

Future proof modular design

Quiet: 49dB average noise at 1m

Remote services and maintenance

Backup and restore functions

# Aquilon RS2

Ref. AQL-RS2



**Mission-critical 4K/8K multi-screen presentation system and videowall processor with 16 inputs and 12 outputs, delivering uncompromising presentation experiences to high-end staging and premium system integration**

## **Aquilon RS2 at a glance :**

- 16x 4K60p seamless inputs (8x HDMI 2.0, 4x DP 1.2, 4x 12G-SDI)
- 12x 4K60p HDMI 2.0 outputs
- 80 Mpx throughput at 10-bit 4:4:4 @60Hz on Program
- Up to 8x 4K60p Program outputs or to 12x 2K/Dual-Link@60p Program outputs
- Up to 8x 4K or 16x 2K/Dual-Link mixing layers (doubled if split layers)
- Unscaled live or still image seamless background mixer on each output
- 12x 4K or 24x 2K concurrent still images
- 4RU chassis

## KEY FEATURES :

Based on LivePremier™ platform

Highly ruggedized chassis with cleanable air filter

Swappable redundant power supplies (1+1)

16x seamless 4K60p inputs (8x HDMI 2.0, 4x DP 1.2, 4x 12G-SDI)

12x 4K60p active outputs (12x HDMI 2.0)

True 4K60p 4:4:4 performance on every I/O channel

Ultra-low latency 10 and 12-bit processing

Full set of field swappable I/O cards available separately (DP 1.2, 12G-SDI, HDMI 2.0, SFP+ or HDMI 2.0 over fiber) to accommodate any connectivity arrangements

Support 4K60p input and output as single, double or quad plugs

Compatible with Analog Way DPH104 video processor: easily convert one 4K DP 1.2 output to 4 independent full HD outputs (requires a DP output card)

80 Megapixels throughput at 10-bit 4:4:4 on Program, without restricting Preview or Multiviewer

Up to 8x 4K or 16x DL/2K mixing layers per system (16x 4K or 32x DL/2K split layers), depending on the screens setup

12x 4K or 24x 2K concurrent still images

Unscaled seamless background mixer on each output (using instantaneous still images or live sources)

Flexible layer management

Seamless crossfade on all mixing layers, on all 16 sources

Scaled 4K60p AUX feature for all non-PGM outputs

Ability to create layers on AUX outputs without using processing resources

Ability to place the outputs anywhere on an almost limitless video canvas space for special LED wall applications

Inboard clocks, timers and countdowns for your screens or AUX outputs

2x configurable 4K Multiviewers with 64x resizable widgets

Advanced pixel pitch management for LED wall applications

Native Dante™ audio networking hardware and support (64x64)

Real-time SDR/HDR10/HLG conversion based on 3D-LUTs

Rotation capability on each output (increment of 90°)

Independent output rates

Framelock or internal sync. generator

**Web RCS:** highly intuitive, lightning fast web-based user interface based on HTML5 with password protection

Live video thumbnails shown on GUI

Multi operator real-time collaboration

Easily create and recall preset looks on all your screens and auxiliary outputs

Custom output formats for non-standard display applications

Area of Interest feature to customize active areas of outputs

Still images support variable alpha-channels for transparent background on logos

Cut and Fill

Fully functional simulator for offline configuration and practice

EDID management on every input and output

Compatible with HDCP 1.4 and HDCP 2.2

Future proof modular design

Quiet: 49dB average noise at 1m

Remote services and maintenance

Backup and restore functions

# Aquilon RS1

Ref. AQL-RS1



**Mission-critical 4K/8K multi-screen presentation system and videowall processor with 16 inputs and 8 outputs, delivering uncompromising presentation experiences to high-end staging and premium system integration**

## **Aquilon RS1 at a glance :**

- 16x 4K60p seamless inputs (8x HDMI 2.0, 4x DP 1.2, 4x 12G-SDI)
- 8x 4K60p HDMI 2.0 outputs
- 40 Mpx throughput at 10-bit 4:4:4 @60Hz on Program
- Up to 4x 4K60p Program outputs or to 8x 2K/Dual-Link@60p Program outputs
- Up to 4x 4K or 8x 2K/Dual-Link mixing layers (doubled if split layers)
- Unscaled live or still image seamless background mixer on each output
- 12x 4K or 24x 2K concurrent still images
- 4RU chassis



## KEY FEATURES :

Based on LivePremier™ platform

Highly ruggedized chassis with cleanable air filter

Swappable redundant power supplies (1+1)

16x seamless 4K60p inputs (8x HDMI 2.0, 4x DP 1.2, 4x 12G-SDI)

8x 4K60p active outputs (8x HDMI 2.0)

True 4K60p 4:4:4 performance on every I/O channel

Ultra-low latency 10 and 12-bit processing

Full set of field swappable I/O cards available separately (DP 1.2, 12G-SDI, HDMI 2.0, SFP+ or HDMI 2.0 over fiber) to accommodate any connectivity arrangements

Support 4K60p input and output as single, double or quad plugs

Compatible with Analog Way DPH104 video processor: easily convert one 4K DP 1.2 output to 4 independent full HD outputs (requires a DP output card)

40 Megapixels throughput at 10-bit 4:4:4 on Program, without restricting Preview or Multiviewer

Up to 4x 4K or 8x DL/2K mixing layers per system (8x 4K or 16x DL/2K split layers), depending on the screens setup

12x 4K or 24x 2K concurrent still images

Unscaled seamless background mixer on each output (using instantaneous still images or live sources)

Flexible layer management

Seamless crossfade on all mixing layers, on all 16 sources

Scaled 4K60p AUX feature for all non-PGM outputs

Ability to create layers on AUX outputs without using processing resources

Ability to place the outputs anywhere on an almost limitless video canvas space for special LED wall applications

Inboard clocks, timers and countdowns for your screens or AUX outputs

2x configurable 4K Multiviewers with 64x resizable widgets

Advanced pixel pitch management for LED wall applications

Native Dante™ audio networking hardware and support (64x64)

Real-time SDR/HDR10/HLG conversion based on 3D-LUTs

Rotation capability on each output (increment of 90°)

Independent output rates

Framelock or internal sync. generator

**Web RCS:** highly intuitive, lightning fast web-based user interface based on HTML5 with password protection

Live video thumbnails shown on GUI

Multi operator real-time collaboration

Easily create and recall preset looks on all your screens and auxiliary outputs

Custom output formats for non-standard display applications

Area of Interest feature to customize active areas of outputs

Still images support variable alpha-channels for transparent background on logos

Cut and Fill

Fully functional simulator for offline configuration and practice

EDID management on every input and output

Compatible with HDCP 1.4 and HDCP 2.2

Future proof modular design

Quiet: 49dB average noise at 1m

Remote services and maintenance

Backup and restore functions

# Aquilon RS alpha

Ref. AQL-RS-ALPHA



**Mission-critical 4K/8K multi-screen presentation system and videowall processor with 8 inputs and 4 outputs, delivering uncompromising presentation experiences to high-end staging and premium system integration**

## **Aquilon RS alpha at a glance :**

- 8x 4K60p seamless inputs (8x HDMI 2.0)
- 4x 4K60p HDMI 2.0 outputs
- 40 Mpx throughput at 10-bit 4:4:4 @60Hz on Program
- Up to 4x 4K60p Program outputs or to 8x 2K/Dual-Link@60p Program outputs
- Up to 4x 4K60p or 8x Dual/2K60p mixing layers (doubled if split layers)
- Unscaled live or still image seamless background mixer on each output
- 12x 4K or 24x 2K concurrent still images
- 4RU chassis

## KEY FEATURES :

Based on LivePremier™ platform

Highly ruggedized chassis with cleanable air filter

Swappable redundant power supplies (1+1)

8x seamless 4K60p HDMI 2.0 inputs

4x 4K60p HDMI 2.0 active outputs

True 4K60p 4:4:4 performance on every I/O channel

Ultra-low latency 10 and 12-bit processing

Full set of field swappable I/O cards available separately (DP 1.2, 12G-SDI, HDMI 2.0, SFP+ or HDMI 2.0 over fiber) to accommodate any connectivity arrangements

Support 4K60p input and output as single, double or quad plugs

Compatible with Analog Way DPH104 video processor: easily convert one 4K DP 1.2 output to 4 independent full HD outputs (requires a DP output card)

40 Megapixels throughput at 10-bit 4:4:4 on Program, without restricting Preview or Multiviewer

Up to 4x 4K or 8x DL/2K mixing layers per system (8x 4K or 16x DL/2K split layers), depending on the screens setup

12x 4K or 24x 2K concurrent still images

Unscaled seamless background mixer on each output (using instantaneous still images or live sources)

Flexible layer management

Seamless crossfade on all mixing layers, on all 8 sources

Scaled 4K60p AUX feature for all non-PGM outputs

Ability to create layers on AUX outputs without using processing resources

Ability to place the outputs anywhere on an almost limitless video canvas space for special LED wall applications

Inboard clocks, timers and countdowns for your screens or AUX outputs

2x configurable 4K Multiviewers with 64x resizable widgets

Advanced pixel pitch management for LED wall applications

Native Dante™ audio networking hardware and support (64x64)

Real-time SDR/HDR10/HLG conversion based on 3D-LUTs

Rotation capability on each output (increment of 90°)

Independent output rates

Framelock or internal sync. generator

**Web RCS:** highly intuitive, lightning fast web-based user interface based on HTML5 with password protection

Live video thumbnails shown on GUI

Multi operator real-time collaboration

Easily create and recall preset looks on all your screens and auxiliary outputs

Custom output formats for non-standard display applications

Area of Interest feature to customize active areas of outputs

Still images support variable alpha-channels for transparent background on logos

Cut and Fill

Fully functional simulator for offline configuration and practice

EDID management on every input and output

Compatible with HDCP 1.4 and HDCP 2.2

Future proof modular design

Quiet: 49dB average noise at 1m

Remote services and maintenance

Backup and restore functions

# Aquilon C+

Ref. AQL-C+



**Fully modular and scalable 4K/8K multi-screen presentation system and videowall processor with up to 24x 4K60p inputs, 20x 4K60p outputs and 12x 4K mixing layers**

## **Aquilon C+ at a glance :**

- 8, 16 or 24 seamless 4K60p inputs via 2, 4 or 6 field swappable input connector cards
- From 4 to 20 active 4K60p outputs via 5 field swappable output connector cards
- Full set of I/O cards available featuring HDMI2.0, DP1.2, 12G-SDI, SFP+ and HDMI2.0 over fiber
- Up to 12x 4K60p or to 20x Dual Link @60p Program outputs
- Up to 3 video processing cards, each supporting 4x 4K or 8x 2K/Dual-Link mixing layers
- Up to 2 still image processing cards, each supporting 12x 4K or 24x 2K concurrent still images
- Unscaled live or still image seamless background mixer on each output
- 5RU chassis

## KEY FEATURES :

Based on LivePremier™ platform

Highly ruggedized chassis with cleanable air filter

Swappable redundant power supplies (2+1)

Up to 24x seamless 4K60p inputs and up to 20x 4K60p outputs

Field-installable input & output connector cards to accommodate a variety of connectivity arrangements

Full set of I/O cards available featuring HDMI2.0, DP1.2, 12G-SDI, SFP+ and HDMI2.0 over fiber

True 4K60p 4:4:4 performance on every I/O channel

Ultra-low latency 10 and 12-bit processing

Support 4K60p input and output as single, double or quad plugs

Compatible with Analog Way DPH104 video processor: easily convert one 4K DP 1.2 output to 4 independent full HD outputs (requires a DP output card)

Up to 120 Megapixels throughput at 10-bit 4:4:4 on Program, without restricting Preview or Multiviewer

Up to 12x 4K or 24x DL/2K mixing layers per system (24x 4K or 48x DL/2K split layers), depending on the screens setup

Up to 24x 4K or 48x 2K concurrent still images

Unscaled seamless background mixer on each output (using instantaneous still images or live sources)

Flexible layer management

Seamless crossfade on all mixing layers, on all sources

Scaled 4K60p AUX feature for all non-PGM outputs

Ability to create layers on AUX outputs without using processing resources

Ability to place the outputs anywhere on an almost limitless video canvas space for special LED wall applications

Inboard clocks, timers and countdowns for your screens or AUX outputs

2x configurable 4K Multiviewers with 64x resizable widgets

Advanced pixel pitch management for LED wall applications

Native Dante™ audio networking hardware and support (64x64)

Real-time SDR/HDR10/HLG conversion based on 3D-LUTs

Rotation capability on each output (increment of 90°)

Independent output rates

Framelock or internal sync. generator

**Web RCS:** highly intuitive, lightning fast web-based user interface based on HTML5 with password protection

Live video thumbnails shown on GUI

Multi operator real-time collaboration

Easily create and recall preset looks on all your screens and auxiliary outputs

Custom output formats for non-standard display applications

Area of Interest feature to customize active areas of outputs

Still images support variable alpha-channels for transparent background on logos

Cut and Fill

Fully functional simulator for offline configuration and practice

EDID management on every input and output

Compatible with HDCP 1.4 and HDCP 2.2

Future proof modular design

Quiet: 49dB average noise at 1m

Remote services and maintenance

Backup and restore functions

# Aquilon C

Ref. AQL-C



**Fully modular and scalable 4K/8K multi-screen presentation system and videowall processor with up to 16x 4K60p inputs, 16x 4K60p outputs and 8x 4K mixing layer**

## **Aquilon C at a glance :**

- 8 or 16 seamless 4K60p inputs via 2 or 4 field swappable input connector cards
- From 4 to 16 active 4K60p outputs via 4 field swappable output connector cards
- Full set of I/O cards available featuring HDMI2.0, DP1.2, 12G-SDI, SFP+ and HDMI2.0 over fiber
- Up to 8x 4K60p or to 16x Dual Link @60p Program outputs
- Up to 2 video processing cards, each supporting 4x 4K or 8x 2K/Dual-Link mixing layers
- Optional still image processing card supporting 12x 4K or 24x 2K concurrent still images
- Unscaled live or still image seamless background mixer on each output
- 4RU chassis

## KEY FEATURES :

Based on LivePremier™ platform

Highly ruggedized chassis with cleanable air filter

Swappable redundant power supplies (1+1)

Up to 16x seamless 4K60p inputs and up to 16x 4K60p outputs

Field-installable input & output connector cards to accommodate a variety of connectivity arrangements

Full set of I/O cards available featuring HDMI2.0, DP1.2, 12G-SDI, SFP+ and HDMI2.0 over fiber

True 4K60p 4:4:4 performance on every I/O channel

Ultra-low latency 10 and 12-bit processing

Support 4K60p input and output as single, double or quad plugs

Compatible with Analog Way DPH104 video processor: easily convert one 4K DP 1.2 output to 4 independent full HD outputs (requires a DP output card)

Up to 80 Megapixels throughput at 10-bit 4:4:4 on Program, without restricting Preview or Multiviewer

Up to 8x 4K or 16x DL/2K mixing layers per system (16x 4K or 32x DL/2K split layers), depending on the screens setup

Up to 12x 4K or 24x 2K concurrent still images

Unscaled seamless background mixer on each output (using instantaneous still images or live sources)

Flexible layer management

Seamless crossfade on all mixing layers, on all sources

Scaled 4K60p AUX feature for all non-PGM outputs

Ability to create layers on AUX outputs without using processing resources

Ability to place the outputs anywhere on an almost limitless video canvas space for special LED wall applications

Inboard clocks, timers and countdowns for your screens or AUX outputs

2x configurable 4K Multiviewers with 64x resizable widgets

Advanced pixel pitch management for LED wall applications

Native Dante™ audio networking hardware and support (64x64)

Real-time SDR/HDR10/HLG conversion based on 3D-LUTs

Rotation capability on each output (increment of 90°)

Independent output rates

Framelock or internal sync. generator

**Web RCS:** highly intuitive, lightning fast web-based user interface based on HTML5 with password protection

Live video thumbnails shown on GUI

Multi operator real-time collaboration

Easily create and recall preset looks on all your screens and auxiliary outputs

Custom output formats for non-standard display applications

Area of Interest feature to customize active areas of outputs

Still images support variable alpha-channels for transparent background on logos

Cut and Fill

Fully functional simulator for offline configuration and practice

EDID management on every input and output

Compatible with HDCP 1.4 and HDCP 2.2

Future proof modular design

Quiet: 49dB average noise at 1m

Remote services and maintenance

Backup and restore functions

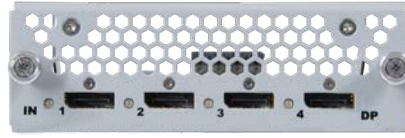
# INPUT CARDS

## HDMI inputs Ref. ACC-AQL-IN-HDMI



- 4x HDMI 2.0 input connectors, each supporting up to 4K60p 8-bit 4:4:4

## DP inputs Ref. ACC-AQL-IN-DP



- 4x DisplayPort 1.2 input connectors, each supporting up to 4K60p 10-bit 4:4:4

## 12G-SDI inputs Ref. ACC-AQL-IN-SDI



- 4x 12G-SDI input connectors, each supporting up to 4K60p 10-bit
- Compatible with HD-SDI, 3G-SDI (level A & B) and 6G-SDI

## SFP inputs Ref. ACC-AQL-IN-SFP



- 4x SFP cages input connectors, each supporting up to 4K60 10-bit 4:2:2

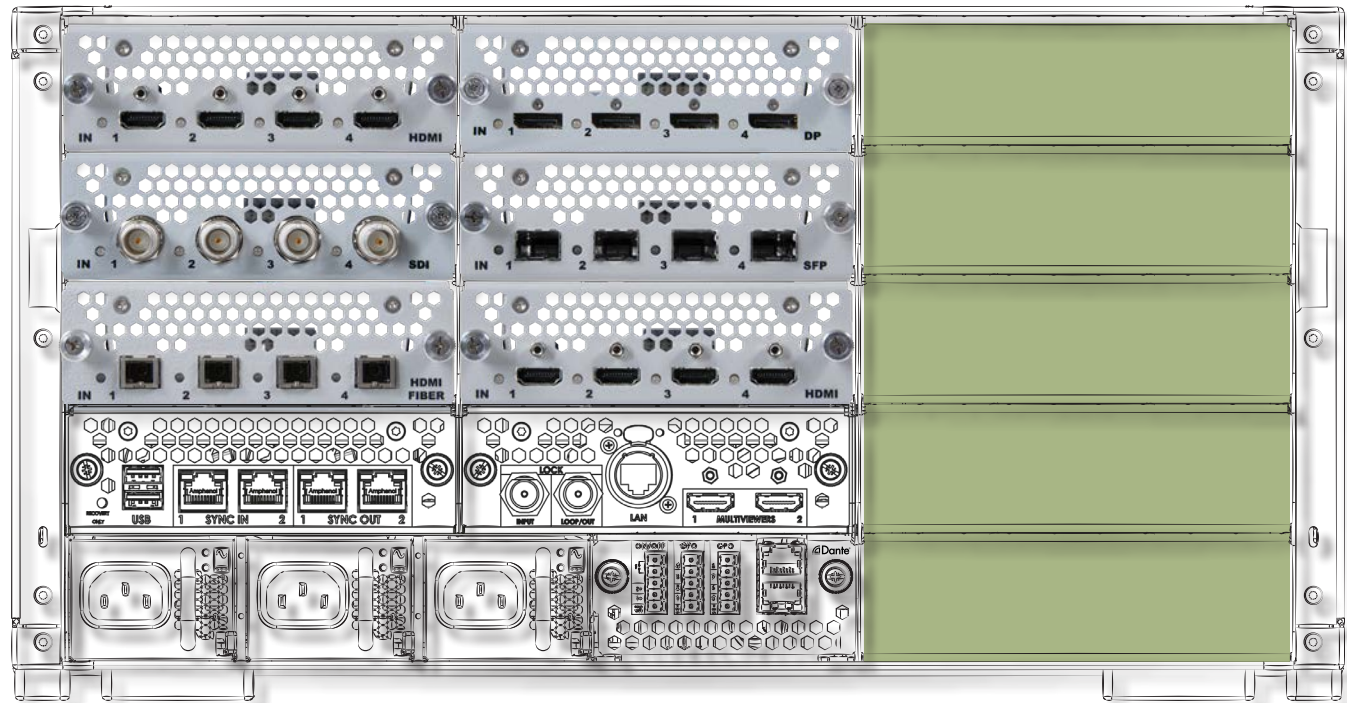
## HDMI over Fiber inputs Ref. ACC-AQL-IN-HDMI-FBR



- 4x 4x HDMI 2.0 over fiber input connectors, each supporting formats up to 4K60 8 bits 4:4:4 or 4K60 10 bits 4:2:2 as well as custom resolutions such as extra-wide 8192x1080@60Hz.

### INPUT CARDS

### OUTPUT CARDS





# OUTPUT CARDS

## HDMI outputs Ref. ACC-AQL-OUT-HDMI



- 4x HDMI 2.0 output connectors, each supporting up to 4K60p 8-bit 4:4:4

## DP outputs Ref. ACC-AQL-OUT-DP



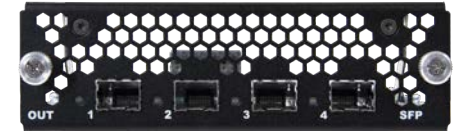
- 4x DisplayPort 1.2 output connectors, each supporting up to 4K60p 10-bit 4:4:4

## SDI outputs Ref. ACC-AQL-OUT-SDI



- 4x 12G-SDI output connectors, each supporting up to 4K60p 10-bit 4:2:2
- Compatible with HD-SDI, 3G-SDI (level A & B) and 6G-SDI

## SFP outputs Ref. ACC-AQL-IN-SFP



- 4x SFP cages output connectors, each supporting up to 4K60 10-bit 4:2:2

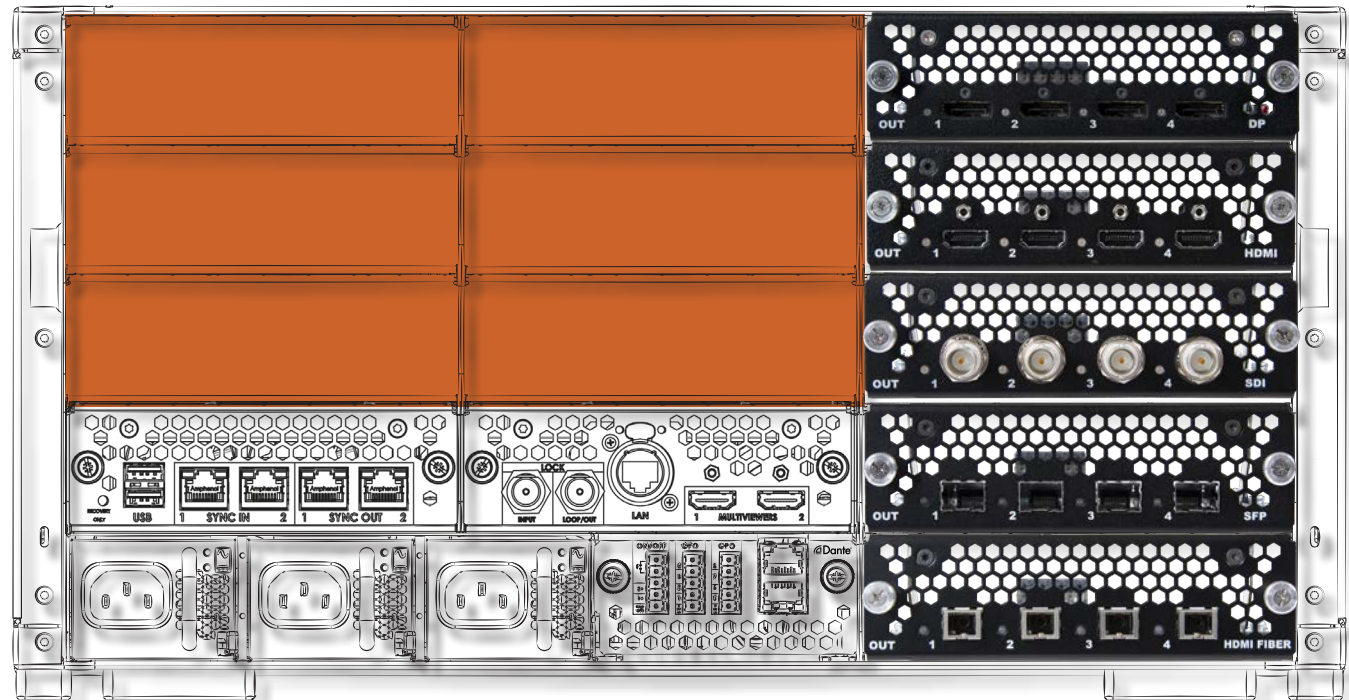
## HDMI over Fiber outputs Ref. ACC-AQL-OUT-HDMI-FBR



- 4x HDMI 2.0 over fiber output connectors, each supporting resolutions up to 4K60 8 bits 4:4:4 or 4K60 10 bits 4:2:2 as well as custom output formats such as 8192x1080@60Hz

## INPUT CARDS

## OUTPUT CARDS



# CONTROLLERS

## RC400T - REF. RC400T



- New event controller for the **LivePremier™** multi-screen live presentation systems
- Heavy-duty design
- Designed for fault-free operation
- Instant access to crucial functionalities
- High resolution T-Bar
- Three-axis joystick for easy and fast PIP sizing/positioning
- 48 user-programmable buttons with customizable LCD displays
- 8 user-assignable custom function buttons

## CONTROL BOX<sup>2</sup>



- Compact solution to easily control live events
- Compatible with **LivePremier™**, **LiveCore™** series and **Midra™ 4K** series
- Heavy-duty extruded aluminum case
- T-Bar for manual smooth transitions

## SHOT BOX<sup>2</sup>



- Cost effective solution to control the presets
- Compatible with **LivePremier™**, **LiveCore™** and **Midra™ 4K** series

# ACCESSORIES

## PROTECTIVE CASE FOR AQUILON – REF. ACC-AQL-HARD-CASE



- Protective hard case for **Aquilon**
- Compatible with **LivePremier™** series (4RU and 5RU chassis)
- Oversized heavy-duty handles and wide-set double wheels
- Shock-absorbent shell
- High density XLPE protective foam
- Foam tray on top to hold accessories and cables

## DPH104 - REF. DPH104



- 4K video wall processor for Analog Way **LivePremier™** presentation systems and **Picturall™** media servers
- Easily drive four independent full HD displays from one single 4K60 video signal
- No software, no configuration, zero latency processing
- HDR compliant
- Multichannel audio pass-through
- Mounting kit included to accommodate one or two DPH104 devices in one rack (19") space

# HDMI 2.0 FIBER EXTENDERS & POWER TRAY

## FULL 4K HDMI 2.0 COMPATIBLE OPTICAL RECEIVER/TRANSMITTER



- Single fiber port (standard SC connector)
- Fully compatible with HDMI 2.0
- Uncompressed video up to 18 Gbps bandwidth
- True 4K60 4:4:4 performance
- Status LED for easy troubleshooting
- HDR compliant with HDR10 and HLG
- Supports up to 8 embedded audio channels per output (PCM)
- EDID management
- Compliant with HDCP 1.4 and HDCP 2.2
- Ruggedized design
- Also compatible with LivePremier HDMI 2.0 over fiber I/O cards

## RACK-MOUNTABLE POWER TRAY FOR OPTICAL EXTENDERS



Ref. OPT-POWERTRAY-SC  
Ref. OPT-POWERTRAY-NTQ  
Ref. OPT-POWERTRAY-NTD



- Up to 8 or 16 optical extenders in the tray
- Any combination of transmitters and receivers
- Three types of connectors depending of reference: SC, Neutrik opticalCON Duo and Quad
- Status LED for 5V DC power feedback
- Inner optical cables numbered for easy identification and installation
- Independent powering of each USB port
- Protection against overload and short circuit
- Noiseless passive cooling
- Ruggedized design

# SFP MODULES

ST2110 SFP Receiver  
Ref. SFP-3G-2110-RX



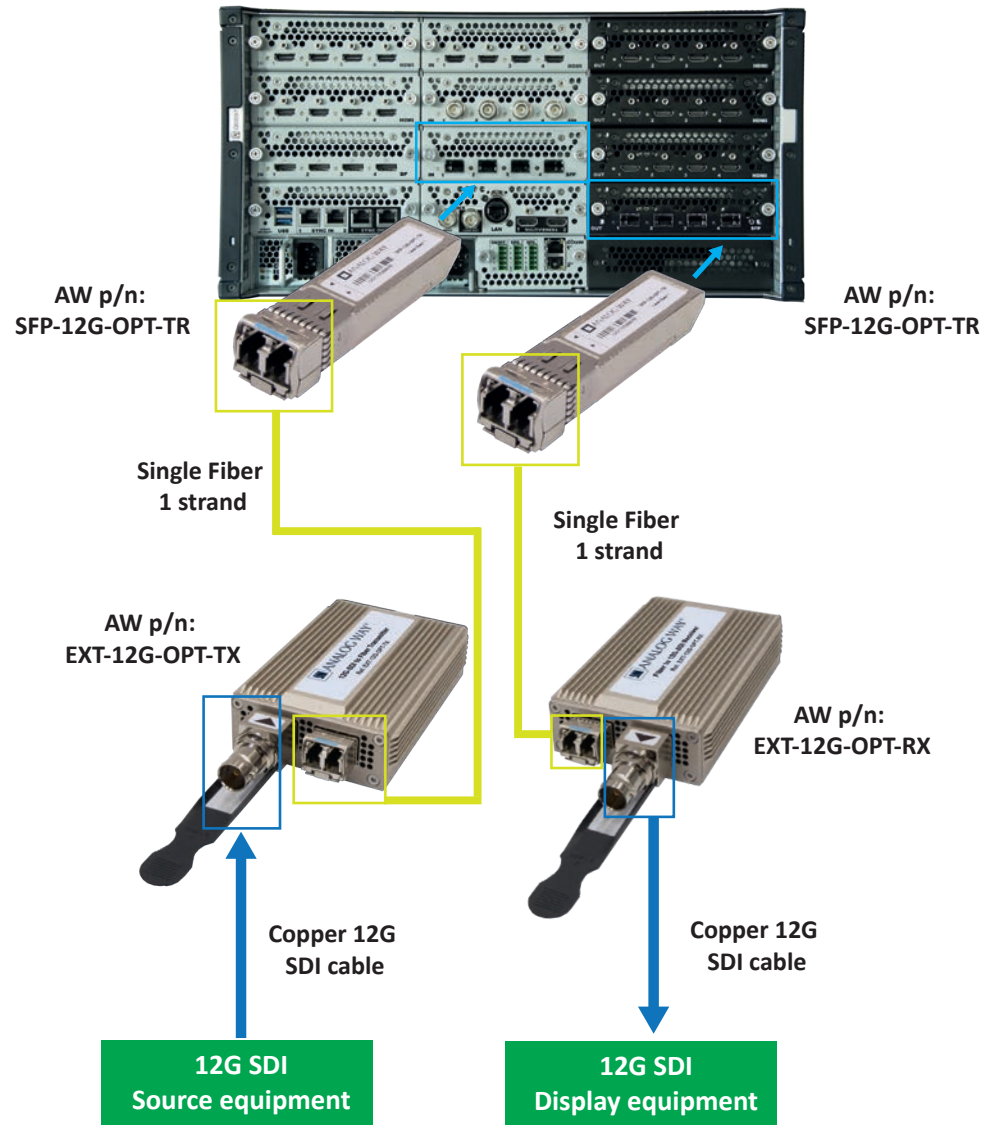
12G-SDI video SFP+ Receiver  
Ref. SFP-12G-BNC-RX



Single-Mode LC fiber to 12G-SDI Receiver  
Ref. EXT-12G-OPT-RX



High performance 12G/6G/3G/HD/SD-SDI optical receivers/  
transmitters allowing the transport of 4K60 4:2:2 10-bit signals over  
distances up to 20km using a single-mode fiber optic cable



ST2110 SFP Transmitter  
Ref. SFP-3G-2110-TX



12G-SDI video SFP+ Transmitter  
Ref. SFP-12G-BNC-TX



12-SDI to Single-Mode LC Fiber Transmitter  
Ref. EXT-12G-OPT-TX



# OVERALL COMPARISON

References	Aquilon RS4	Aquilon RS3	Aquilon RS2	Aquilon RS1	Aquilon RS alpha	Aquilon C+	Aquilon C
<b>INPUTS</b>	<b>24</b>	<b>24</b>	<b>16</b>	<b>16</b>	<b>8</b>	<b>From 8 to 24</b>	<b>From 8 to 16</b>
HDMI 2.0	12	12	8	8	8	[0 ; 24]	[0 ; 16]
DP 1.2	8	8	4	4	0*	[0 ; 24]	[0 ; 16]
12G-SDI	4	4	4	4	0*	[0 ; 24]	[0 ; 16]
SFP+	0*	0*	0*	0*	0*	[0 ; 24]	[0 ; 16]
HDMI 2.0 over Fiber	0*	0*	0*	0*	0*	[0 ; 24]	[0 ; 16]
HDCP 1.4 <sup>(1)</sup> & HDCP 2.2 <sup>(1)(2)</sup>	✓	✓	✓	✓	✓	✓	✓
<b>OUTPUTS</b>	<b>16</b>	<b>12</b>	<b>12</b>	<b>8</b>	<b>4</b>	<b>From 4 to 20</b>	<b>From 4 to 16</b>
HDMI 2.0	16	12	12	8	4	[0 ; 20]	[0 ; 16]
DP 1.2	0*	0*	0*	0*	0*	[0 ; 20]	[0 ; 16]
12G-SDI	0*	0*	0*	0*	0*	[0 ; 20]	[0 ; 16]
SFP+	0*	0*	0*	0*	0*	[0 ; 20]	[0 ; 16]
HDMI 2.0 over Fiber	0*	0*	0*	0*	0*	[0 ; 20]	[0 ; 16]
HDCP 1.4 <sup>(1)</sup> & HDCP 2.2 <sup>(1)(2)</sup>	✓	✓	✓	✓	✓	✓	✓
<b>SCREENS</b>							
Max 4K60 Program outputs	12	8	8	4	4	12	8
Max 2K/DL@60 Program outputs	16	12	12	8	4	20	16
Screen Preset Memories	1000	1000	1000	1000	1000	1000	1000
Master Preset Memories	500	500	500	500	500	500	500
<b>AUXILIARY SCREENS</b>							
Unused outputs as scaled 4K AUX	✓	✓	✓	✓	✓	✓	✓
<b>LAYERS (max)</b>							
4K Mixing	12	8	8	4	4	12	8
4K Split	24	16	16	8	8	24	16
Dual Link Mixing	24	16	16	8	8	24	16
Dual Link Split	48	32	32	16	16	48	32
Native Background	✓	✓	✓	✓	✓	✓	✓
Flexible Layer Management	✓	✓	✓	✓	✓	✓	✓
<b>IMAGES</b>							
4K images	24	24	12	12	12	Up to 24	Up to 12
Dual Link images	48	48	24	24	24	Up to 48	Up to 24
Multi-file download via WebRCS	✓	✓	✓	✓	✓	✓	✓
Capture from Live inputs	✓	✓	✓	✓	✓	✓	✓
Available Image slots	200	200	200	200	200	200	200
<b>MULTIVIEWERS</b>							
Dedicated HDMI outputs	2	2	2	2	2	2	2
Max resizable widget per output	64	64	64	64	64	64	64
Built-in clocks, timers & clock down	✓	✓	✓	✓	✓	✓	✓
Multiviewer Preset memories	50	50	50	50	50	50	50

(1) On compliant connectors

(2) Feature not available in version 1.0

(\*) Available separately as accessories

# OVERALL COMPARISON

References	Aquilon RS4	Aquilon RS3	Aquilon RS2	Aquilon RS1	Aquilon RS alpha	Aquilon C+	Aquilon C
<b>AUDIO</b>							
De-embed audio channels per input	8	8	8	8	8	8	8
Embed audio channels per output	8	8	8	8	8	8	8
Native DANTE audio network	64x64	64x64	64x64	64x64	64x64	64x64	64x64
<b>PROCESSING</b>							
Future-proof modular design	✓	✓	✓	✓	✓	✓	✓
Compliant with HDR10 and HLG <sup>(2)</sup>	✓	✓	✓	✓	✓	✓	✓
Output rotation per 90° <sup>(2)</sup>	✓	✓	✓	✓	✓	✓	✓
Bezel Compensation	✓	✓	✓	✓	✓	✓	✓
Soft-Edge blend management	✓	✓	✓	✓	✓	✓	✓
<b>TRANSITION &amp; EFFECTS</b>							
True A/B Mix	✓	✓	✓	✓		✓	✓
Enhanced layer border & shadow	✓	✓	✓	✓	✓	✓	✓
Transitions: Cut, Fade, Slide, Wipe, Circle, Stretch	✓	✓	✓	✓	✓	✓	✓
Layer effects: Background cut, Transparency, Luma/Chroma key, DSK, H&V Flip, Cut and Fill	✓	✓	✓	✓	✓	✓	✓
Color effects: B&W, Negative, Sepia, Solarize	✓	✓	✓	✓	✓	✓	✓
<b>CONTROL</b>							
<b>Web RCS</b>	✓	✓	✓	✓	✓	✓	✓
<b>Shot Box<sup>2</sup> / Control Box<sup>2</sup></b>	✓	✓	✓	✓	✓	✓	✓
<b>RC400T event controller</b>	✓	✓	✓	✓	✓	✓	✓
REST API and TCP command protocol	✓	✓	✓	✓	✓	✓	✓
Crestron driver	✓	✓	✓	✓	✓	✓	✓
<b>AW Video Compositor for LivePremier™</b>	✓	✓	✓	✓	✓	✓	✓
<b>PLATFORM</b>							
Chassis	5RU	5RU	4RU	4RU	4RU	5RU	4RU
Swappable power supplies	✓ (2+1)	✓ (2+1)	✓ (1+1)	✓ (1+1)	✓ (1+1)	✓ (2+1)	✓ (1+1)
Warranty (+ extension)	✓	✓	✓	✓	✓	✓	✓

(1) On compliant connectors

(2) Feature not available in version 1.0

(\*) Available separately as accessories



# SUCCESS STORIES



*Evolve Technology Offers Customers HDR Capabilities With Version 2 Firmware Update for Analog Way's Aquilon RS2 and RS4 Systems (USA)*

*Portugal's AVK Installs Analog Way's Aquilon RS4 to Drive Multiple LED Displays and Streaming in New Hybrid Studio*



SEE MORE, CONNECT WITH US ON: [f](#) [in](#) [t](#) [v](#)

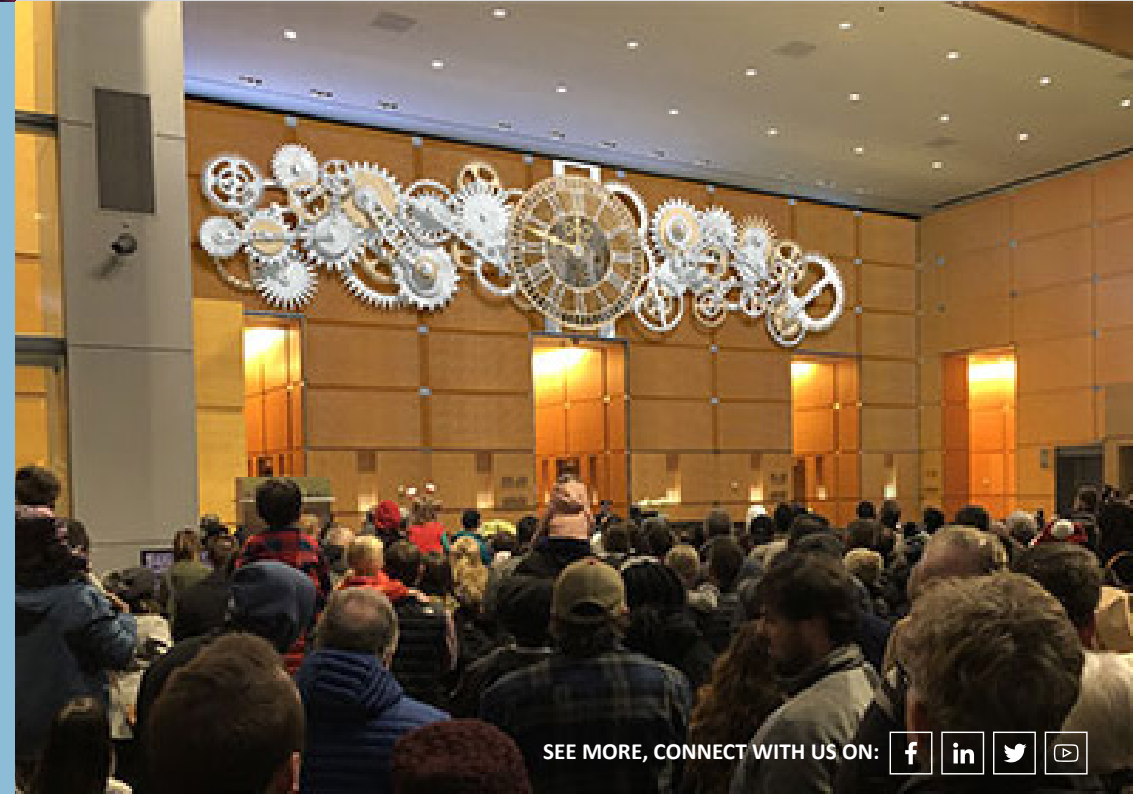


# SUCCESS STORIES



*JCM Global® Chooses Analog Way's Aquilon C+ to Drive Three Rooms of Displays at New Desert Diamond West Valley Casino*

*David Niles Upgrades Philadelphia's The Comcast Experience with 27 Million Pixel LED Videowall With Analog Way's Aquilon C+ and Picturall Pro Media Servers*

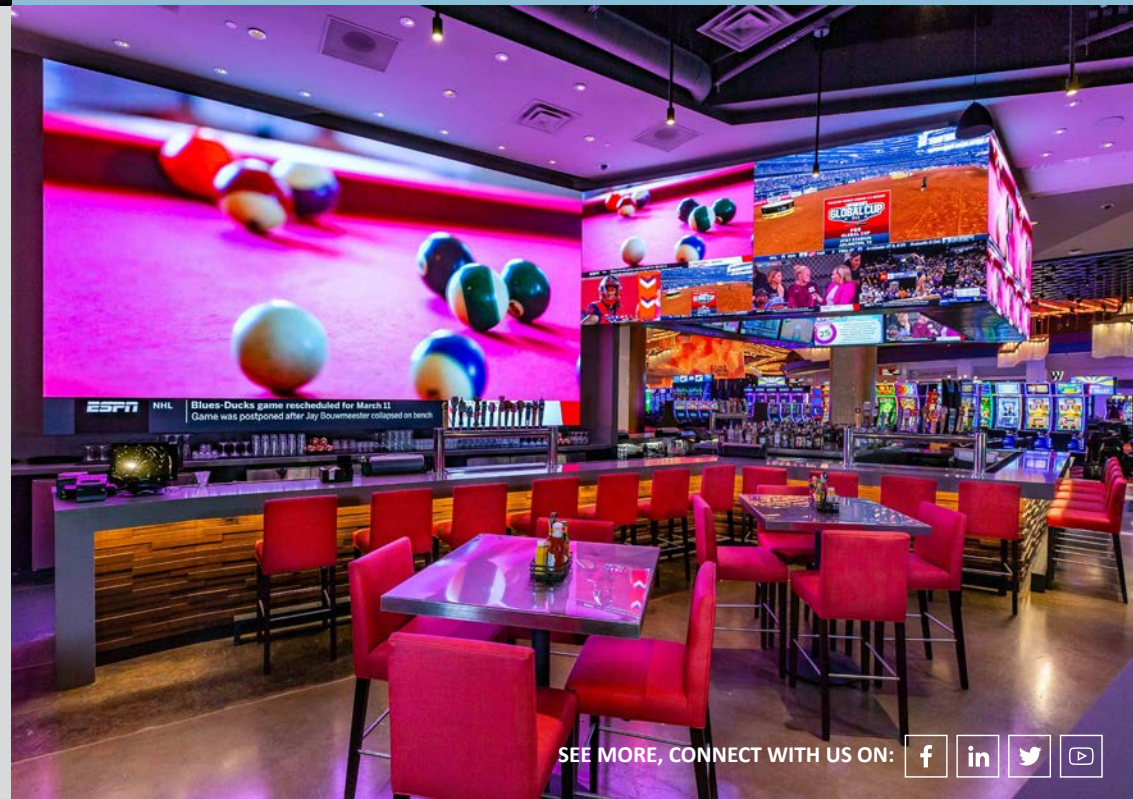


# SUCCESS STORIES



*Analog Way's Aquilon C Processor Drives New 8th Avenue Rooftop LED Spectacular for SNA Displays in New York (USA).*

*JCM Global® Chooses Analog Way's Aquilon C+ to Drive Three Rooms of Displays at New Desert Diamond West Valley Casino in Glendale (USA).*



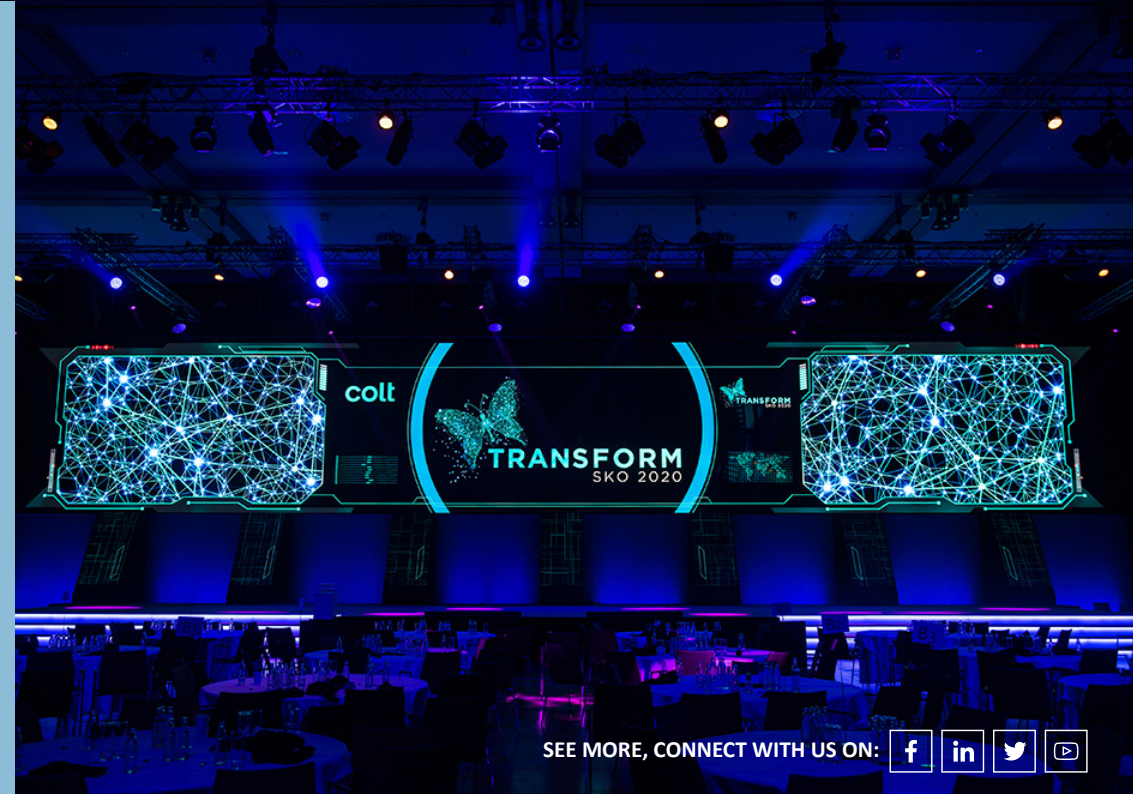
SEE MORE, CONNECT WITH US ON: [f](#) [in](#) [t](#) [v](#)

# SUCCESS STORIES



*Analog Way's Aquilon RS2 Drives Videowalls at Walmart's JIA 2020 Event in Mexico.*

*Colt Technology Services' Annual Global Sales Kick Off 2020 in Berlin Uses Analog Way Aquilon RS3 to Drive Impressive 28m Ultra-Widescreen LED Wall (Germany).*



SEE MORE, CONNECT WITH US ON: [f](#) [in](#) [t](#) [v](#)

# SUCCESS STORIES



*NATO's Cyber Security Conference NIAS 2019 Uses Analog Way Aquilon RS2 to Drive Plenary Session's Widescreen Projection (Belgium).*

*Brill AV Delivers Analog Way Aquilon Solution for High-Resolution LED Videowall Content in Paris.*



# SUCCESS STORIES



*Analog Way's Aquilon RS4 Drives Big Screens at BIG 2019 Innovation Conference in Paris.*

*The conference and gala dinner for PTT Petroleum AGM, Thailand's premier multinational energy company, became the first event in the country to use Analog Way's new Aquilon RS2 to drive a massive array of LED video displays.*



SEE MORE, CONNECT WITH US ON: [f](#) [in](#) [t](#) [v](#)



### **Analog Way SAS - Headquarters**

Tel.: +33 (0)1 81 89 08 60  
2/4 rue Georges Besse  
92160 Antony  
FRANCE

### **Analog Way Inc.**

Tel.: +1 (678) 487 6644  
Toll free: +1 855 353 4988  
3047 Summer Oak Place  
Buford, GA 30518  
USA

### **Analog Way Limited**

Tel.: +852 6882 7140  
Unit 2705-06 - 27/F  
Tung Seng Commercial Building  
69 Jervois Street  
Sheung Wan, HONG KONG

### **Analog Way ME**

Tel.: +971 50 401 3577  
G043 - 7WA  
Dubai Airport Free Zone  
P.O. Box 371977  
Dubai - UAE



For a list of all other office locations,  
please visit [www.analogway.com](http://www.analogway.com)

Connect with us on



[info@analogway.com](mailto:info@analogway.com)

**Photos of the Success Stories : Courtesy of our customers & partners:**

Evolve Technology (USA), JCM Global ® (USA), The Comcast Experience designed by David Niles (USA), AVK (Portugal), SNA Displays (USA), A&V Soluciones Audiovisuales (Mexico), Colt Technology Services (Germany), NSI Agency (Belgium), Aquila (France), KS Plus Light & Sound System Co.,Ltd (Thailand) & Brill Audio Visual Ltd (Budapest, Hungary)