



Picturall Mark II

MEDIAS SERVERS

Picturall Mark II media servers

The **Picturall Mark II** series is an extensive range of heavy-duty media servers designed to play huge video content across large video canvases, while providing ease-of-use and rock-solid reliability at affordable prices.

OUTSANDING PLAYBACK PERFORMANCE

The **Picturall Mark II** media servers deliver industry-leading performance so that your show runs like clockwork. With flexible live input options, the ability to drive up to 16 LED wall 4K@60 controllers or video projectors from a single server unit and enough power to play media up to 16K resolution or uncompressed file sequences up to 8K60 10-bit, the **Picturall Mark II** series is the obvious solution to any demanding video playback need in fixed installations, museums, broadcast, houses of worship, video rentals and live events.

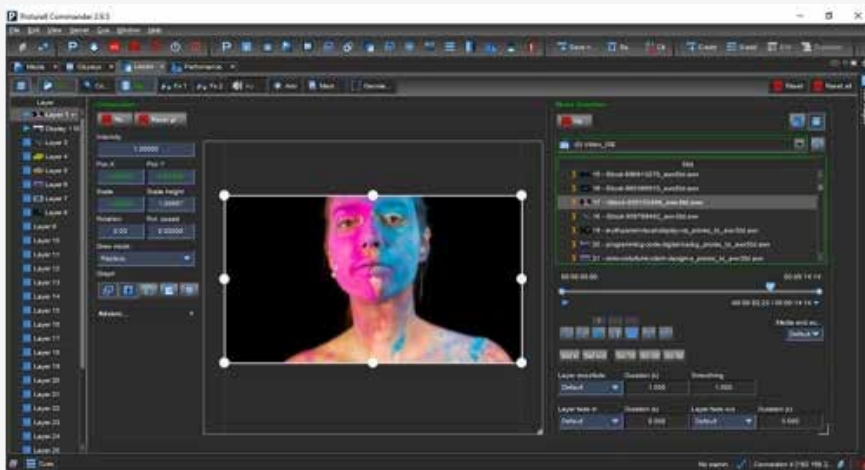


ROCK-SOLID RELIABILITY

Built on Analog Way's long experience in ruggedized low-maintenance hardware, the **Picturall Mark II** media servers have been designed to provide a robust, heavy-duty platform and deliver optimized uptimes and durability for any mission-critical applications. In order to avoid any downtime during preventive maintenance, the chassis offers easy access to front fans and filter for swift cleaning. Additionally, the **Picturall Mark II** media servers are based on the rock-solid Linux software engine by Picturall renowned for its extreme reliability, which is a result of 15 years of R&D development and field experience.

POWERFUL FEATURES

The **Picturall Mark II** media servers offer all the tools you need to creatively integrate the solution that your customer has envisioned. Features like automatic show start, custom resolutions and virtual displays, parallel cue lists, cue tracking, timecode-based cue triggering, cue scheduling, real-time effects, crossfades between clips as well as multi-user control, give you flexibility in programming and control.



FLEXIBLE SETUP AND CONTROL

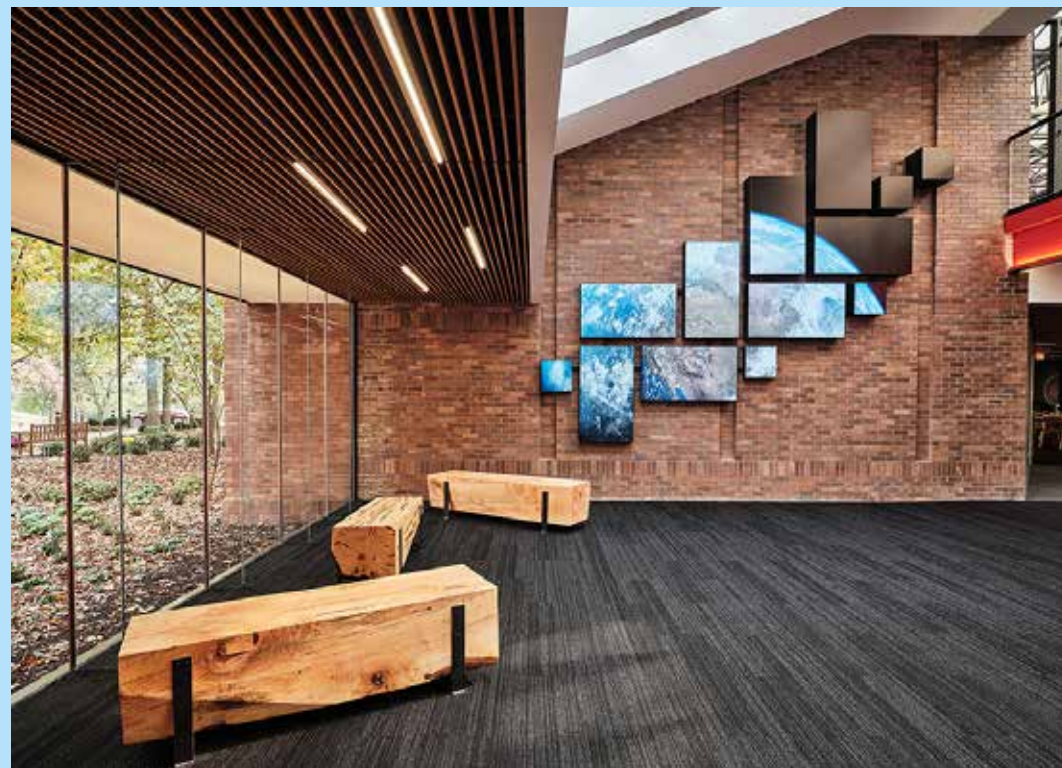
The **Picturall Commander** software is an intuitive, elegant and powerful user interface to configure and control the **Picturall Mark II** media servers. All the servers offer IP (Ethernet) and Art-Net interface, which enables easy integration with many third-party control systems. The **Picturall Mark II** media servers are also compatible with various remote control software such as Universe or Companion.



ADVANCED MEDIA PROCESSING

The **Picturall Mark II** media servers have been designed to offer the best image quality and to process a wide variety of network streams and media including:

- AWX, AWX HQ AND AWX ALPHA (proprietary high-performance codec with unlimited media width and height)
- HAP, HAP-Q, HAP ALPHA AND HAP-Q ALPHA
- APPLE™ PRORES (any version including ProRes 4444)
- NOTCHLC™
- MPEG1, MPEG2, MPEG4, MJPEG
- H.264, H.265 (INCLUDING NETWORK STREAMS)
- NEWTEK™ NDI V5.0 live video streaming (input/output)
- JPG, TGA, TIFF, BMP, GIF, PNG with ALPHA CHANNEL
- Uncompressed image sequences (TGA, DPX, BMP)



EXTENSIVE INPUT OPTIONS

Depending on the selected chassis size, the **Picturall Mark II** media servers can be equipped with up to six low-latency input cards allowing to capture either 24x 1080p60 or 6x 2160p60 sources. A wide selection of input interfaces is available, supporting one or more channels of 3G-SDI, HDMI 1.4 or HDMI 2.0, and offering professional connectivity for even greater reliability. The **Picturall Mark II** media servers can also receive several network video streams (RTSP, RTMP, SRT and UDP) and are compatible with Newtek™ NDI and NDI/HX live video streaming. They can also display HTML-based web content with full Java script support.

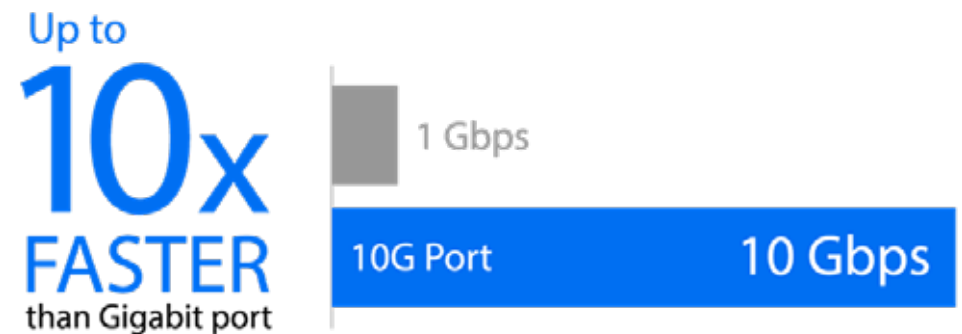


HIGH-PERFORMANCE STORAGE

The **Picturall Mark II** media servers come standard with NVMe™ read-intensive professional drives (option for Twin Compact Mark II), offering consistent performance and reliability for demanding 24x7 environments. Built with PCIe® Gen4 x4 interface, the drives can deliver a read rate of up to 10.5 GB/s in RAID 0 configuration, which is ideal for the most demanding large-scale video playback applications. Depending on the servers, several storage options are available from 1TB up to 32TB, capable of storing several hours of high-quality uncompressed video content.

FASTER NETWORKING

The **Picturall Mark II** media servers offer high network bandwidth with two standard 10Gb/s Ethernet drives (option for Twin Compact Mark II) for faster transmission of massive media files and for more networked video streams (NDI, RTSP, RTMP, SRT and UDP...). Two additional 1Gb/s ports and/or one additional 10Gb/s port can be optionally installed for even more flexibility with your network configuration.



MULTI-CHANNEL AUDIO PROCESSING

The **Picturall Mark II** media servers offer synchronized multi-channel audio playback and supports real-time audio de-embedding and routing from HDMI or SDI sources, network streams and web sources. The **Picturall Mark II** media servers feature several optional audio interfaces, including one with 2 balanced XLR inputs and 2 balanced XLR outputs, as well as a 32-channel Dante™ audio interface delivering instant access to any audio devices on the network. They are also compatible with a wide variety of 3rd party multi-channel USB interfaces.



COMPATIBLE WITH DPH104 IMAGE PROCESSOR

The **Picturall Mark II** media servers are compatible with Analog Way DPH104 image processor able to convert one 4K DisplayPort output to four 1080p HDMI outputs. For example, it is possible to drive up to 64 full HD outputs from a single **Picturall Pro Mark II** server equipped with 4 output cards or to drive 16 full HD outputs with a **Picturall Quad Mark II**.



QUICK OVERVIEW

	Picturall Pro Mark II	Picturall Quad Mark II	Picturall Quad Compact Mark II	Picturall Twin Compact Mark II
Outputs	4 (up to 16)	4	4	2
Option genlock/frameclock card	✓			
Inputs	Up to 24 (6 input cards)	Up to 24 (6 input cards)	Up to 8 (2 input cards)	Up to 8 (2 input cards)
Network	2x 10Gb/s	2x 10Gb/s	2x 10Gb/s	2x 1Gb/s
Default storage	2TB NVMe (2x 1TB)	1TB NVMe	1TB NVMe	480GB SSD
Storage options	Up to 32TB	Up to 8TB	Up to 8TB	Up to 8TB
Uncompressed playback up to	8K@60Hz	4K@60Hz	4K@60Hz	1080p@60Hz
Playback AWX media up to	16K@60hz	8K@60Hz	8K@60Hz	4K@60Hz
Chassis	4RU	4RU	2RU	2RU
Optional redundant, hot-swappable power supplies	✓	✓		

Picturall Pro Mark II



Picturall Quad Mark II



PRODUCT PICTURES

Picturall Quad Compact Mark II



Picturall Twin Compact Mark II



DP 1.2 Over Fiber Extender



DPH104



ACCESSORIES

AWX Plugin for Adobe CC



Picturall Pro Mark II

Ref. MSP16-MKII-R1



Mission critical 16K media server with up to sixteen 4K@60 10-bit outputs. Engineered for the support of massive events and installations from one single server unit

Picturall Pro Mark II at a glance:

- Modular design with extensive I/O capability
- Heavy-duty ruggedized 4RU chassis
- Up to 16x 4K@60Hz 10-bit outputs
- Up to 24 inputs (HDMI 1.4, HDMI 2.0, 3G-SDI)
- Uncompromised playback performance up to 16K@60Hz with AWX codec
- Uncompressed playback up to 8K@60Hz 10-bit
- Flexible integration with 3rd party control systems
- Rock-solid media server Linux software engine
- 3-year standard warranty

KEY FEATURES :

Runs on custom and optimized Linux operating system

Designed for mission critical 24/7 applications

Up to 16x 4K@60Hz 10-bit outputs in one chassis

Up to 24 inputs (HDMI 1.4, HDMI 2.0, 3G-SDI) with Neutrik connectors

Pixel accurate synchronization between all outputs

Custom output resolutions and virtual display feature for LED walls

Programmable outputs and layers positioning, rotation, color correction, warping and blending

Soft-edge blending of multiple projectors

EDID support

Unlimited media width and height with AWX codec (limited only by hardware performance)

Uncompromised video playback performance: up to 18 layers of 4K@60Hz video or 6 layers of 8K@60Hz video or 1 layer of 16K@60Hz video (with AWX codec)

NotchLC™ playback up to 8 layers of 4K@60Hz video or one layer of 8K@60Hz video

Uncompressed playback up to 8K@60Hz 10-bit

Apple™ ProRes authorized product

2x 10Gb/s Ethernet

Optional 32-channel Dante™ audio interface

HTML browser input for layers

Support for Newtek™ NDI (version 5) live video streaming (input/output)

Support for RTSP, RTMP, SRT and UDP network streams

36 real-time effects including comprehensive keying options

Flexible integration with 3rd party control systems

Use the included Picturall commander software for complete control of your event

Flexible cue-based show programming with cue tracking feature

Supports external LTC / MTC signal controlled cue triggering

Supports server internal timecode formats: system wallclock, timecode generator, media playback

Supports scheduling for single and repeating events based on time and date

Support for single-layer crossfades on every layer

Automatic show start on boot

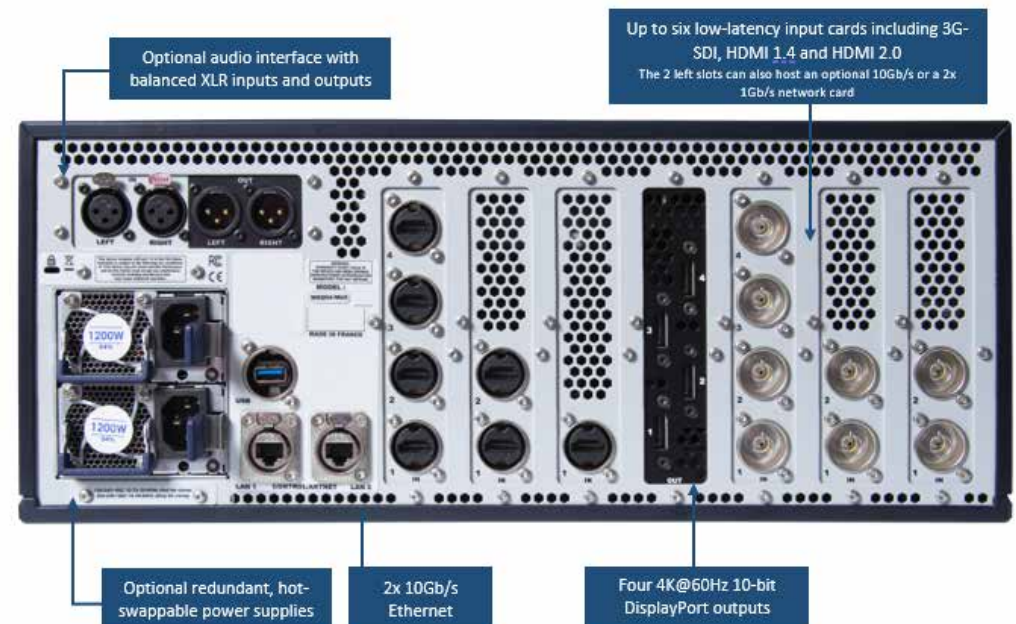
Multi-user control

Optional redundant, hot-swappable power supplies

Ruggedized, rack mountable 4RU chassis

Easy access to front fans and filter for swift cleaning

3-year standard warranty, extendable to 5 years



Picturall Quad Mark II

Ref. MSQ04-MKII-R1



Heavy-duty 8K media server with four 4K@60 10-bit outputs. Designed for large scale events and installations requiring high levels of performance and stability

Picturall Quad Mark II at a glance:

- Heavy-duty ruggedized 4RU chassis
- Four 4K@60Hz 10-bit outputs
- Up to 24 inputs (HDMI 1.4, HDMI 2.0, 3G-SDI)
- 8K@60Hz playback performance with AWX codec
- Uncompressed playback up to 4K@60Hz 10-bit
- Flexible integration with 3rd party control systems
- Rock-solid media server Linux software engine
- 3-year standard warranty

KEY FEATURES :

Runs on custom and optimized Linux operating system

Four 4K@60Hz 10-bit outputs

Up to 24 inputs (HDMI 1.4, HDMI 2.0, 3G-SDI) with Neutrik connectors

Pixel accurate synchronization between all outputs

Custom output resolutions and virtual display feature for LED walls

Programmable outputs and layers positioning, rotation, color correction, warping, blending and more...

Soft-edge blending of multiple projectors

EDID support

Unlimited media width and height with AWX codec (limited only by hardware performance)

High video playback performance: : playback up to 38 layers of 1080p@60Hz video or 10 layers of 4K@60Hz video or 2 layers of 8K@60 video (with AWX codec and the 2 NVME drive option in RAID-0 configuration)

Uncompressed playback up to 4K@60Hz 10-bit

NotchLC™ playback up to 6 layers of 1080p@60Hz video or 2 layers of 4K@60Hz video

Apple™ ProRes authorized product

2x 10Gb/s Ethernet

HTML browser input for layers

Support for Newtek™ NDI (version 5) live video streaming (input/output)

Support for RTSP, RTMP, SRT and UDP network streams

36 real-time effects including comprehensive keying options

Use the included Picturall commander software for complete control of your event

Flexible integration with 3rd party control systems

Flexible cue-based show programming with cue tracking feature

Supports external LTC and MTC signal controlled cue triggering (external USB audio card required)

Supports server internal timecode formats: system wallclock, timecode generator, media playback

Supports scheduling for single and repeating events based on time and date

Support for single-layer crossfades on every layer

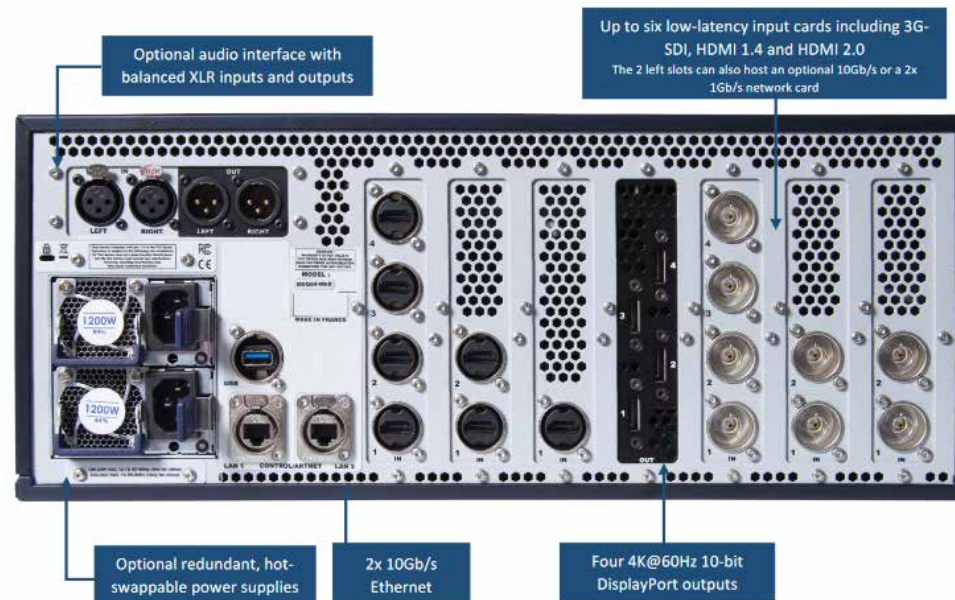
Automatic show start on boot

Multi-user control

Ruggedized, rack mountable 4RU chassis

Easy access to front fans and filter for swift cleaning

3-year standard warranty, extendable to 5 years



Picturall Quad Compact Mark II

Ref. MSQC04-MKII-R1



Heavy-duty, compact 8K media server with four 4K@60 10-bit outputs. Designed for large scale events and installations requiring high levels of performance and stability

Picturall Quad Compact Mark II at a glance:

- Heavy-duty ruggedized compact 2RU chassis
- Four 4K@60Hz 10-bit outputs
- Up to 8 inputs (HDMI 1.4, HDMI 2.0, 3G-SDI)
- 8K@60Hz playback performance with AWX codec
- Uncompressed playback up to 4K@60Hz 10-bit
- Flexible integration with 3rd party control systems
- Rock-solid media server Linux software engine
- 3-year standard warranty

KEY FEATURES :

Runs on custom and optimized Linux operating system

Four 4K@60Hz 10-bit outputs

Up to 8 inputs (HDMI 1.4, HDMI 2.0, 3G-SDI) with Neutrik connectors

Pixel accurate synchronization between all outputs

Custom output resolutions and virtual display feature for LED walls

Programmable outputs and layers positioning, rotation, color correction, warping, blending and more...

Soft-edge blending of multiple projectors

EDID support

Unlimited media width and height with AWX codec (limited only by hardware performance)

High video playback performance: playback up to 38 layers of 1080p@60Hz video or 10 layers of 4K@60Hz video or 2 layers of 8K@60 video (with AWX codec and the 2 NVME drive option in RAID-0 configuration)

Uncompressed playback up to 4K@60Hz 10-bit

NotchLC™ playback up to 6 layers of 1080p@60Hz video or 2 layers of 4K@60Hz video

Apple™ ProRes authorized product

2x 10Gb/s Ethernet

HTML browser input for layers

Support for Newtek™ NDI (version 5) live video streaming (input/output)

Support for RTSP, RTMP, SRT and UDP network streams

36 real-time effects including comprehensive keying options

Use the included Picturall commander software for complete control of your event

Flexible integration with 3rd party control systems

Flexible cue-based show programming with cue tracking feature

Supports external LTC and MTC signal controlled cue triggering (external USB audio card required)

Supports server internal timecode formats: system wallclock, timecode generator, media playback

Supports scheduling for single and repeating events based on time and date

Support for single-layer crossfades on every layer

Automatic show start on boot

Multi-user control

Ruggedized, compact rack mountable 2RU chassis

Easy access to front fans and filter for swift cleaning

3-year standard warranty, extendable to 5 years



Picturall Twin Compact Mark II

Ref. MSTC02-MKII-R1



Heavy-duty, compact dual-output 4K media server. Designed for medium-sized events and installations requiring high levels of performance and reliability

Picturall Twin Compact Mark II at a glance:

- Heavy-duty ruggedized compact 2RU chassis
- Two 4K@60Hz 10-bit outputs
- Up to 8 inputs (HDMI 1.4, HDMI 2.0, 3G-SDI)
- High video playback performance up to 4K with AWX codec
- Uncompressed playback up to 1080@60Hz 10-bit
- Flexible integration with 3rd party control systems
- Rock-solid media server Linux software engine
- 3-year standard warranty

KEY FEATURES :

Runs on custom and optimized Linux operating system

Two 4K@60Hz 10-bit outputs

Up to 8 inputs (HDMI 1.4, HDMI 2.0, 3G-SDI) with Neutrik connectors

Pixel accurate synchronization between the two outputs

Custom output resolutions and virtual display feature for LED walls

Programmable outputs and layers positioning, rotation, color correction, warping, blending and more...

Soft-edge blending of multiple projectors

EDID support

Unlimited media width and height with AWX codec (limited only by hardware performance)

High video playback performance: playback of up to 28 layers of 1080p@60Hz video or 6 layers of 4K@60Hz video (with AWX codec and NVME drive option)

Uncompressed playback up to 1080@60Hz 10-bit

NotchLCT™ playback up to 4 layers of 1080p@60Hz video or 1 layer of 4K@60Hz video

Apple™ ProRes authorized product

HTML browser input for layers

Support for Newtek™ NDI (version 5) live video streaming (input/output)

Support for RTSP, RTMP, SRT and UDP network streams

36 real-time effects including comprehensive keying options

Use the included Picturall commander software for complete control of your event

Flexible integration with 3rd party control system

Flexible cue-based show programming with cue tracking feature

Supports external LTC and MTC signal controlled cue triggering (external USB audio card required)

Supports server internal timecode formats: system wallclock, timecode generator, media playback

Supports scheduling for single and repeating events based on time and date

Support for single-layer crossfades on every layer

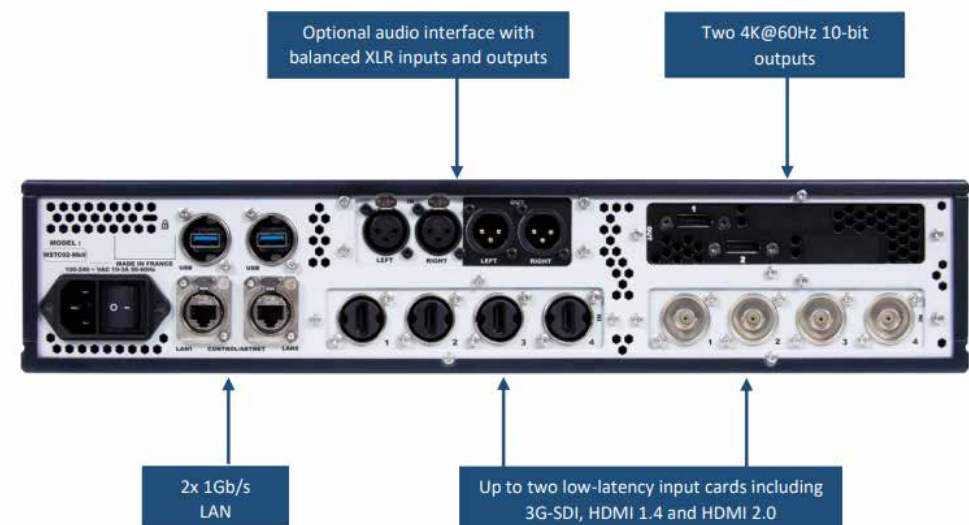
Automatic show start on boot

Multi-user control

Ruggedized, compact rack mountable 2RU chassis

Easy access to front fans and filter for swift cleaning

3-year standard warranty, extendable to 5 years

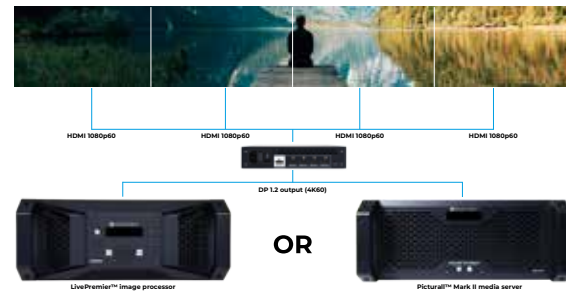


DPH104

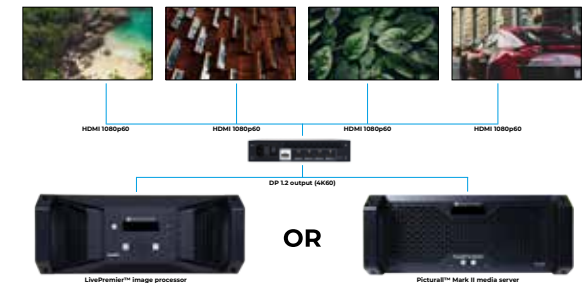
Ref. DPH104



DPH104 is a high-performance latency-free 4K image processor able to convert one 4K DisplayPort output from a **LivePremier™** presentation system or a **Picturall Mark II** media server to four independent 1080p HDMI outputs. All the outputs on the **DPH104** can be used with native resolution just like they were directly connected to the source system. **DPH104** does not require software or configuration, and guarantee an easy and trouble-free installation experience. **DPH104** is a perfect fit for numerous video wall and soft-edge blending applications. You can use multiple **DPH104** devices to easily create even larger display solutions.



Example 1: one 8Kx1K@60Hz input to four 1080p LED wall sending boxes



Example 2: one 8Kx1K@60Hz input (with different contents) to four different screens



Example 3: one 8Kx1K@60Hz input to four 1080p projectors

ACCESSORIES

AWX Plugin for Adobe CC

Ref. AWX-PLUGIN

Analog Way AWX codecs

AWX is a proprietary graphics card accelerated codec family for Analog Way **Picturall Mark II** media servers. **AWX** files are not available for playback for other platforms.



There are four different AWX codecs: AWX, AWX Alpha, AWX HQ and AWX HQ Alpha.

AWX codec offers the lowest data rates for maximum simultaneous playback and AWX Alpha has support for transparency. AWX HQ and AWX HQ Alpha codecs offer the best image quality but at a higher data rate, allowing simultaneous playback of a smaller number of video files.

When and why should I use AWX codecs?

It is recommended to use one of the **AWX** codecs when the performance requirements for the installations exceed typical requirements such as 4K@60. Typical use cases are 8K playback or large blended projection full resolution video playback. **AWX** codecs are for example capable of handling video playback of over 100 megapixels with the **Picturall Pro Mark II** hardware.

The **AWX** codecs are optimized to work with all Picturall Mark II server media and to provide the best possible performance for large-scale installations or events.

AWX Plugin for Adobe CC

The Analog Way **AWX** encoder plugin for Adobe CC provides **AWX** export capabilities to Media Encoder, Premiere and After Effects. This plugin is available for both PC and Mac and can be downloaded from the Download section on Analog Way website.

ACCESSORIES

DP 1.2 Over Fiber Extender

Ref. EXT-DP12-OPT

The **EXT-DP12-OPT** is a DisplayPort 1.2 fiber optical extender (transmitter and receiver kit) providing DisplayPort uncompressed signal extension to a range of 200 m (655 ft.) over one single SC multi-mode fiber. The EXT-DP12-OPT extender supports real 4K UHD (3840x2160 or 4096x2160@60Hz) resolution and a video bandwidth up to 21.6 Gbps. Its compact design makes it ideal to fit in various installation environments or live events.



OVERALL COMPARISON

References	Picturall Pro Mark II	Picturall Quad Mark II	Picturall Quad Compact Mark II	Picturall Twin Compact Mark II
OUTPUTS				
DisplayPort 1.2 outputs	4 (up to 16)	4	4	2
Output resolution up to 4096 x 2160@60Hz 10-bit	✓	✓	✓	✓
Full 4:4:4 color sampling	✓	✓	✓	✓
Streaming NDI output with alpha channel	✓	✓	✓	✓
Optional Genlock & Framelock	✓	✓	✓	✓
Compatible with DPH104	✓	✓	✓	✓
Compatible with EXT-DP12-OPT DisplayPort over Fiber extender	✓	✓	✓	✓
INPUTS & NETWORK STREAMS				
Optional low latency input cards with Neutrik connectors	up to 6	up to 6	up to 2	up to 2
Optional cards: 2x HDMI 1.4, 4x HDMI 1.4, 1x HDMI 2.0, 2x HDMI 2.0, 2x 3G-SDI and 4x 3G-SDI	✓	✓	✓	✓
Network streams (RTSP, RTMP, SRT and UDP)	✓	✓	✓	✓
Newtek™ NDI 5.0 live video streaming (input/output)	✓	✓	✓	✓
SUPPORTED MEDIA FORMATS				
AWX, AWX HQ and AWX alpha (proprietary high performance codec)	✓	✓	✓	✓
Free AWX encoder plugin available for Adobe Creative Cloud	✓	✓	✓	✓
HAP, HAP-Q, HAP Alpha and HAP-Q Alpha	✓	✓	✓	✓
Apple™ ProRes (any version including ProRes 4444)	✓	✓	✓	✓
NotchLC™ 10-bit	✓	✓	✓	✓
MPEG1, MPEG2, MPEG4, MJPEG	✓	✓	✓	✓
H.264, H.265	✓	✓	✓	✓
JPG, TGA, TIFF, BMP, GIF, PNG with alpha channel	✓	✓	✓	✓
Uncompressed image sequences (TGA, DPX, BMP)	✓	✓	✓	✓
HTML-based web content with full Java script support	✓	✓	✓	✓

OVERALL COMPARISON

References	Picturall Pro Mark II	Picturall Quad Mark II	Picturall Quad Compact Mark II	Picturall Twin Compact Mark II
ADVANCED FEATURES				
Independent positioning, blending, keystone and curved surface correction per output	✓	✓	✓	✓
Positioning, rotation, color correction, warping and blending	✓	✓	✓	✓
Real-time effects	36	36	36	36
Cue-based show programming	✓	✓	✓	✓
External LTC / MTC signal controlled cue triggering (audio interface required)	✓	✓	✓	✓
Multiple server internal timecode formats: system wallclock, timecode generator, media playback	✓	✓	✓	✓
Scheduling for single and repeating events based on time and date	✓	✓	✓	✓
Sync layer timecode with another Picturall server over network	✓	✓	✓	✓
Back up and synchronize the show to one or more Picturall media servers	✓	✓	✓	✓
Single-layer crossfades on every layer	✓	✓	✓	✓
MEDIA STORAGE				
Default	2x 1TB read-intensive PCIe-NVMe RAID 0: 2TB (read rate: 10.5GB/s) RAID 1: 1TB (read rate: 5.2GB/s)	1x 1TB read-intensive PCIe-NVMe Read rate: 5.2GB/s	1x 1TB read-intensive PCIe-NVMe Read rate: 5.2GB/s	1x 480GB SSD Read rate: 500MB/s
Storage options	4TB, 8TB, 16TB and 32TB options based on 2 larger capacity PCIe-NVMe disks (read rate up to 10.5GB/s in RAID 0 configuration)	2TB, 4TB and 8TB options based on 1 or 2 larger capacity PCIe-NVMe disks (read rate up to 10.5GB/s in RAID 0 configuration)	2TB, 4TB and 8TB options based on 1 or 2 larger capacity PCIe-NVMe disks (read rate up to 10.5GB/s in RAID 0 configuration)	1TB, 2TB, 4TB and 8TB options based on 1 or 2 larger capacity SSD or one PCIe-NVMe disk (read rate up to 5.2GB/s with PCIe-NVMe disk)

OVERALL COMPARISON

References	Picturall Pro Mark II	Picturall Quad Mark II	Picturall Quad Compact Mark II	Picturall Twin Compact Mark II
AUDIO				
Multi-channel audio playback and routing (up to 32 channels)	✓	✓	✓	✓
Support for multiple simultaneous audio cards and audio output channel routing	✓	✓	✓	✓
Real-time audio de-embedding from HDMI & SDI sources, network streams and web sources	✓	✓	✓	✓
Optional audio interface with 2x balanced XLR inputs and 2x balanced XLR outputs	✓	✓	✓	✓
Optional 32 channels Dante™ audio interface (using any of the available default or optional NIC)	✓	✓	✓	✓
Support 3rd party multi-channel USB interfaces	✓	✓	✓	✓
Audio formats: wav, mp2, aac	✓	✓	✓	✓
PLAYBACK PERFORMANCE (WITH STANDARD STORAGE CONFIGURATION)				
Uncompressed playback up to	8K@60Hz 10-bit	4K@60Hz 10-bit	4K@60Hz 10-bit	1080p@60Hz 10-bit
HD@60 media layers (AWX codec)	66	48	48	12
4K@60 media layers (AWX codec)	18	8	8	2
8K@60 media layers (AWX codec)	6	2	2	0
16K@60 media layers (AWX codec)	1	0	0	0
Canvas size up to	128K pixels across	32K pixels across	32K pixels across	16K pixels across
Layers	200	200	200	200
CONTROL				
Picturall Commander user interface software	✓	✓	✓	✓
Multi-user control				
TCP/IP, ArtNet	✓	✓	✓	✓
Text-based external control for integration with 3rd party control systems	✓	✓	✓	✓
Crestron driver	✓	✓	✓	✓
Compatible with Companion and Universe	✓	✓	✓	✓

OVERALL COMPARISON

References	Picturall Pro Mark II	Picturall Quad Mark II	Picturall Quad Compact Mark II	Picturall Twin Compact Mark II
NETWORKING				
Base configuration	2x 10Gb/s (etherCON RJ45)	2x 10Gb/s (etherCON RJ45)	2x 10Gb/s (etherCON RJ45)	2x 1Gb/s (etherCON RJ45)
Options	2 additional 1Gb/s ports and/or 1 additional 10Gb/s port can be optionally installed (instead of one or two input cards)	2 additional 1Gb/s ports and/or 1 additional 10Gb/s port can be optionally installed (instead of one or two input cards)	2 additional 1Gb/s ports or 1 additional 10Gb/s port can be optionally installed instead of an input card	2 additional 1Gb/s ports or 1 additional 10Gb/s port can be optionally installed instead of an input card
HARDWARE PLATFORM				
System drive	256GB NVMe	256GB NVMe	256GB NVMe	128GB SSD
Optimized Linux OS	✓	✓	✓	✓
CPU	24-Core (2.8GHz)	8-Core (3.2GHz)	8-Core (3.2GHz)	6-Core (3.2GHz)
RAM	64GB DDR4	32GB DDR4	32GB DDR4	16GB DDR4
USB	4x USB 3.0 (2 in the front, 1 in the rear)	4x USB 3.0 (2 in the front, 1 in the rear)	4x USB 3.0 (2 in the front, 1 in the rear)	4x USB 3.0 (2 in the front, 2 in the rear)
Chassis	4RU	4RU	2RU	2RU
Dimensions (without rack ears and rear rack mount)	W 17.30" x H 6.97" x D 25.39" L 440 mm x H 177 mm x P 645 mm	W 17.30" x H 6.97" x D 25.39" L 440 mm x H 177 mm x P 645 mm	W 17.30" x H 3.46" x D 25.20" L 440 mm x H 88 mm x P 640 mm	W 17.30" x H 3.46" x D 25.20" L 440 mm x H 88 mm x P 640 mm
Power supply	1200W	600W	600W	600W
Optional redundant, hot-swappable power supplies	✓	✓		
Warranty (+ extension)	3 years (extendable to 5 years)	3 years (extendable to 5 years)	3 years (extendable to 5 years)	3 years (extendable to 5 years)

SUCCESS STORIES



Analog Way Picturall Pro Media Server Drives Award-winning Entrance Experience at New St. Louis Aquarium (USA)

Analog Way Picturall Pro Media Servers Help Germany's Rent Event Tec Drive LED Videowalls for "BioHackers" Streaming TV Series (Germany)



SUCCESS STORIES



Diversified Selects Analog Way's Picturall Pro Media Server to Drive Lobby Video Exhibit at W.L. Gore's Capabilities Center (USA)

David Niles Upgrades Philadelphia's The Comcast Experience with 27 Million Pixel LED Videowall With Analog Way's Aquilon C+ and Picturall Pro Media Servers (USA)



SUCCESS STORIES



Analog Way's Picturall Quad Media Server Drives LED Video Display at Hospitalized Children's Hospital's Media Production Facility (USA)

Analog Way Ascender Seamless Switchers and Picturall Pro Media Server Drive Massive LED Videowall in the Stratosphere Hotel's New Sports Book (USA)



SEE MORE, CONNECT WITH US ON: [f](#) [in](#) [t](#) [v](#)

SUCCESS STORIES



Analog Way Picturall Pro Media Server Helps Congress Rental Projection Map the Plaza de Toros in Colonia (Uruguay)

Brill AV Delivers Analog Way Aquilon and Picturall Pro Solutions for High-Resolution LED Videowall Content in Paris (France)



SUCCESS STORIES



Analog Way Picturall Pro Media Servers and Aquilon C+ Power “The Link” Digital Art Installation at Choctaw Casino & Resort (USA)

Paris Annual Conference Taps Analog Way Equipment (Ascender 48 and Picturall Pro) to Showcase Complex LED Wall Visuals (France)



SEE MORE, CONNECT WITH US ON: [f](#) [in](#) [t](#) [v](#)



Analog Way SAS - Headquarters

Tel.: +33 (0)1 81 89 08 60
2/4 rue Georges Besse
92160 Antony
FRANCE

Analog Way Inc.

Tel.: +1 (678) 487 6644
Toll free: +1 855 353 4988
3047 Summer Oak Place
Buford, GA 30518
USA

Analog Way Limited

Tel.: +852 2967 0428
Office 1756
17th Floor
700 Nathan Road
Kowloon, HONG KONG

Analog Way ME

Tel.: +971 50 401 3577
G043 - 7WA
Dubai Airport Free Zone
P.O. Box 371977
Dubai - UAE



For a list of all other office locations,
please visit www.analogway.com

Connect with us on

