

QUICK START GUIDE

Midra™ 4K Simulator



Thank you for choosing **Analog Way** and **Midra™ 4K Simulator**. By following these simple steps, you will be able to simulate and use the Web RCS of any Midra™ 4K unit within minutes.

SYSTEM REQUIREMENTS

Midra™ 4K Simulator



Windows: Microsoft® Windows® 10 or above, 200 MB of available hard-disk space for installation
Screen resolution: 1920x1080 minimum.



macOS: macOS X v10.15 (Catalina) or above, 200 MB of available hard-disk space for installation.
Screen resolution: 1920x1080 minimum.

OVERVIEW

Midra™ 4K Simulator allows you to simulate any **Midra™ 4K** seamless presentation switcher on your PC or Mac. Launch the integrated Web-based graphic user interface (Web RCS), interact with the virtual device to design and prepare a show on the road as you would with a real device.

You can then export the show to a USB drive and import it straight into your switcher (firmware versions must match). Configurations exported from real devices can also be imported to a **Midra™ 4K Simulator** session with similar resources (Operating modes, Analog and Dante audio card, etc.).

For more information, please refer to the **Midra™ 4K User Manual** or contact Analog Way Technical Support.

QUICK INSTALL & SETUP

Go to www.analogway.com to find the latest version of the **Midra™ 4K Simulator** installer.

• Installing Midra™ 4K Simulator on Windows

Download the latest version of the **Midra™ 4K Simulator** installer for Windows (the file name is **Midra_4K_Simulator_<version>.exe**). Double-click this file to start installing **Midra™ 4K Simulator**.

A shortcut to **Midra™ 4K Simulator** can be automatically created on the desktop during the installation.

• Installing Midra™ 4K Simulator on macOS X

Download the latest version of the **Midra™ 4K Simulator** installer for Mac (the file name is **Midra_4K_Simulator_<version>.dmg**). Double-click this file to show its contents then drag and drop the **Midra™ 4K Simulator** application into */Applications* to start the installation.

A shortcut to **Midra™ 4K Simulator** is automatically created on the dock during the installation.

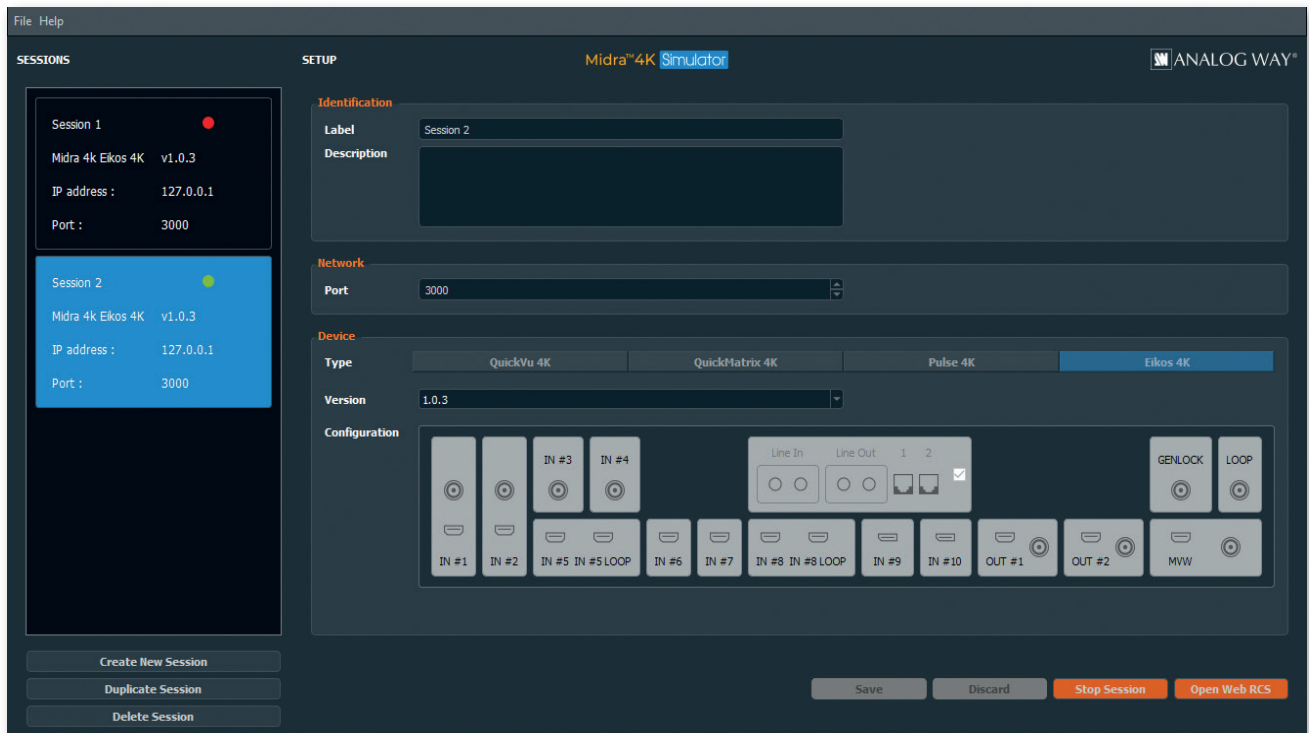
• Repairing / Upgrading Midra™ 4K Simulator

Upgrade **Midra™ 4K Simulator** by following the same procedure as a normal installation.

When reinstalling or upgrading **Midra™ 4K Simulator**, existing sessions are saved.

Note: The latest version is installed by default. To add an earlier version, click on **File>Package manager**, choose the version you want to install and click **Apply**.

USE THE MIDRA™ 4K SIMULATOR



Configure any Midra™ 4K device with the simulator and save it in a session. The **Midra™ 4K Simulator** is able to manage multiple sessions with different device configurations.

Note: - Only one session can be run at a time.
- It is not possible to update a firmware version in a simulation session.

• Create a session - Configure a Midra™ 4K unit

1. Run **Midra™ 4K Simulator**.
 2. Click **Create New Session**.
 3. Set the configuration for the session:
 - **Label:** Enter a label for this session.
 - **Description:** Enter details for this session.
 - **Port:** Change the port number if needed (**3000** by default).
 - **Type:** Select the Midra™ 4K device to simulate.
 - **Version:** Select the firmware version of the Midra™ 4K device.
 - **Configuration:** Check or uncheck the Analog and Dante audio optional card.
 4. Click **Save** to save the selected session.
 5. Click **Start Session** to simulate the selected session.
 6. Click **Open Web RCS** to open the session in the default web browser.
- It is also possible to enter the IP address in a web browser to open the session (**127.0.0.1:3000** by default).

After starting a session, it may take some time to be running and ready. Refresh the web page if needed.

For more details on the Web RCS, please refer to the Midra™ 4K User Manual.

- **Stop a session - Save a show configuration**

Note: It is important to stop a session to save the changes made in the simulation sessions.

When a session is opened in the **Midra™ 4K Simulator**, click **Stop Session** to close the session and save the changes made during this session.

- **Start an existing session**

Sessions are saved in the computer storage. When closing and restarting the **Midra™ 4K Simulator**, it is possible to start an existing session.

1. Run **Midra™ 4K Simulator**.
2. Click a session in the left panel.
3. Click **Start Session** to simulate the selected session.
4. Click **Open Web RCS** to open the session in the default web browser.

- **Duplicate a session**

1. Run **Midra™ 4K Simulator**.
2. Click a session in the left panel.
3. Click **Duplicate Session** to create a new session with the same parameters.

- **Delete a session**

Note: This cannot be undone and all configurations, images and shows related to the session will be lost.

1. Run **Midra™ 4K Simulator**.
2. Click a session in the left panel.
3. Click **Delete Session** to delete the selected session.

PASSWORD PROTECTION

It is possible to enable password protection for the Web RCS in **Dashboard** > Security. The default password is **11:22:33:44:55:66** when using the **Midra™ 4K Simulator**.

Caution: If lost, the password cannot be reset to default when using the Midra™ 4K Simulator.

STILL IMAGES IN THE WEB RCS

Still images features are fully supported by **Midra™ 4K Simulator**, they work as if using a real device.

- **Transfer still images from a computer to the simulated device**

1. Open the Web RCS and go to **Library**.
2. On the computer file browser, select one or multiple images (or a folder).
3. Drag and drop the selection in the **Drop images or folder of images** block.
Or click the block to open the file explorer and select image files to transfer.
4. Click **Upload Images**.


The selected images are imported in the Library and can be loaded as Foreground™ and Background images.

Note: - The image Library is saved in the session of the **Midra™ 4K Simulator**.
- The entire image Library is copied when the session is duplicated in the **Midra™ 4K Simulator**.

EXPORT / IMPORT WEB RCS CONFIGURATION

•Export a simulated device configuration

It is possible to export a configuration from a simulated device.


1. In the top bar of the Webc RCS, click , then **Save / Load**.
2. In the **Save** panel, select the current configuration.
3. In the filters, select the settings to export.
4. Click **Export**.

The configuration file is downloaded to the computer.

Note: the still image Library (image files) and all image parameters can be included in the configuration file using the filters.

•Import a simulated device configuration

It is possible to import a configuration created with **Midra™ 4K Simulator** to a real Midra™ 4K device.

1. In the top bar of the Web RCS, click , then **Save / Load**.
2. In the **Load** panel, click **Upload file** and select the configuration file to import.
Or drag and drop the configuration file from the computer file explorer to the **Upload file** area.
The configuration is extracted and conflicting settings are grayed out in the filters (version incompatibility, obsolete information, device logs, etc.).
3. In the filters, select the settings to import.
4. Select how to merge the images in the Library.
5. Click **Load**.

The configuration file is loaded to the Midra™ 4K device and applied to the current configuration.

THIRD PARTY CONTROLLERS

The simulated Web RCS is also able to receive commands from external controllers such as:

- Simple REST API (HTTP) and advanced TCP protocol based on JSON
- Crestron driver and AW VideoCompositor for Midra™ 4K

GOING FURTHER WITH MIDRA™ 4K

For complete details and operations procedures, please refer to the **Midra™ 4K User Manual** and our website for further information: www.analogway.com